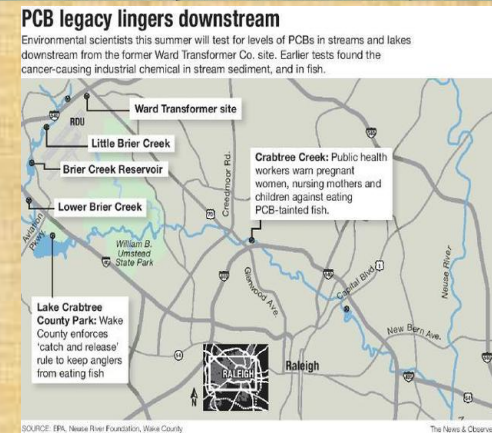




Put your Best Foot Forward

Integration of E-Plan

Wake County Emergency Management



WHY WE PLAN AND TRAIN!

ConAgra Explosion



June 9, 2009

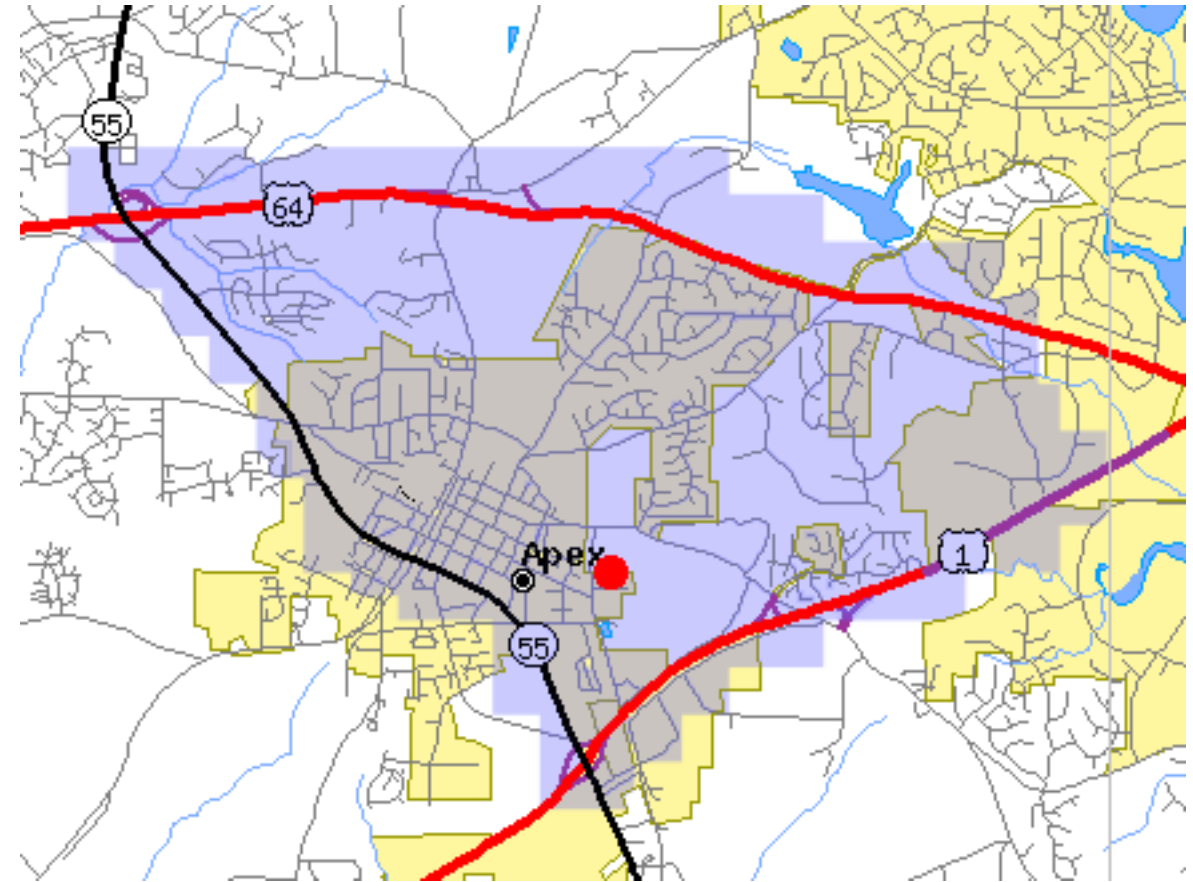
ConAgra Overview



Photographs Courtesy of:

- ***Lee Wilson***
- ***WRAL Television***
- ***Sara D. Davis/Getty Images North America)***
- ***Garner Fire-Rescue***
- ***Wake County Fire and Emergency Management***

Apex NC Chemical Fire

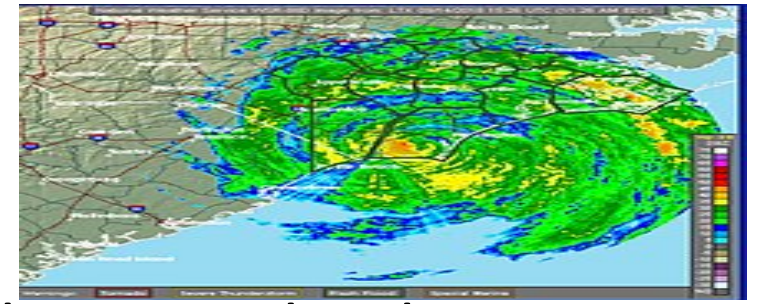


- October 5, 2006 - nearly 17,000 residents Evacuated
- Command Post moved 5 times
- 300 Emergency Responders involved



HURRICANES....."Every Year"

- From 1980 to the present encompasses 120 tropical storms that have affected the state. Listed some Major Hurricanes for NC
- Diana, Emily, Hugo
- Fran
- Floyd
- Mathew
- Florence
- Dorian

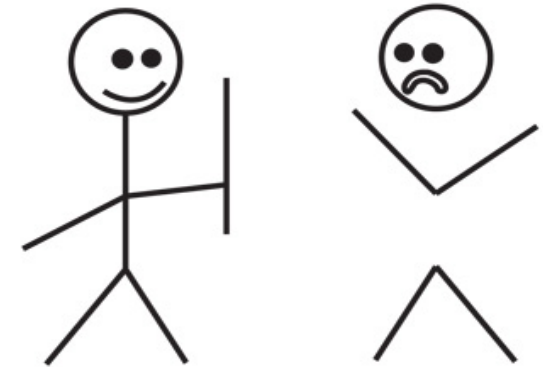


WHY Plan?

- Chemical facilities HAZMAT RESPONSE
- Transportation/Commodity Flows
- Weather Disasters: Hurricanes, Tornadoes, Flooding
- Mass casualties incidents



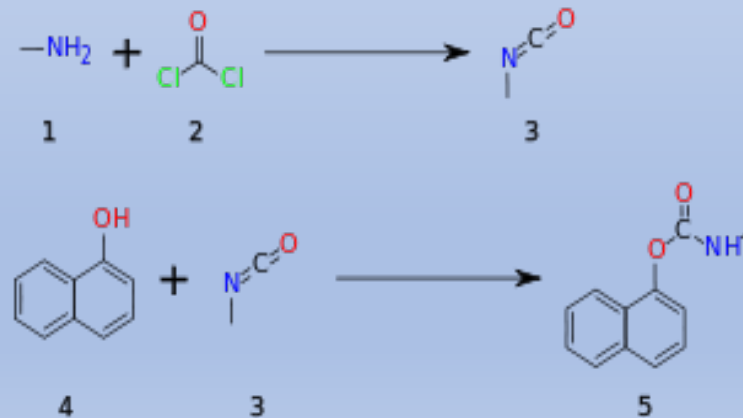
I've got your back!



Goal –Open Discussion about best practical uses for E-Plan.....ties in with the next class for Medical facilities

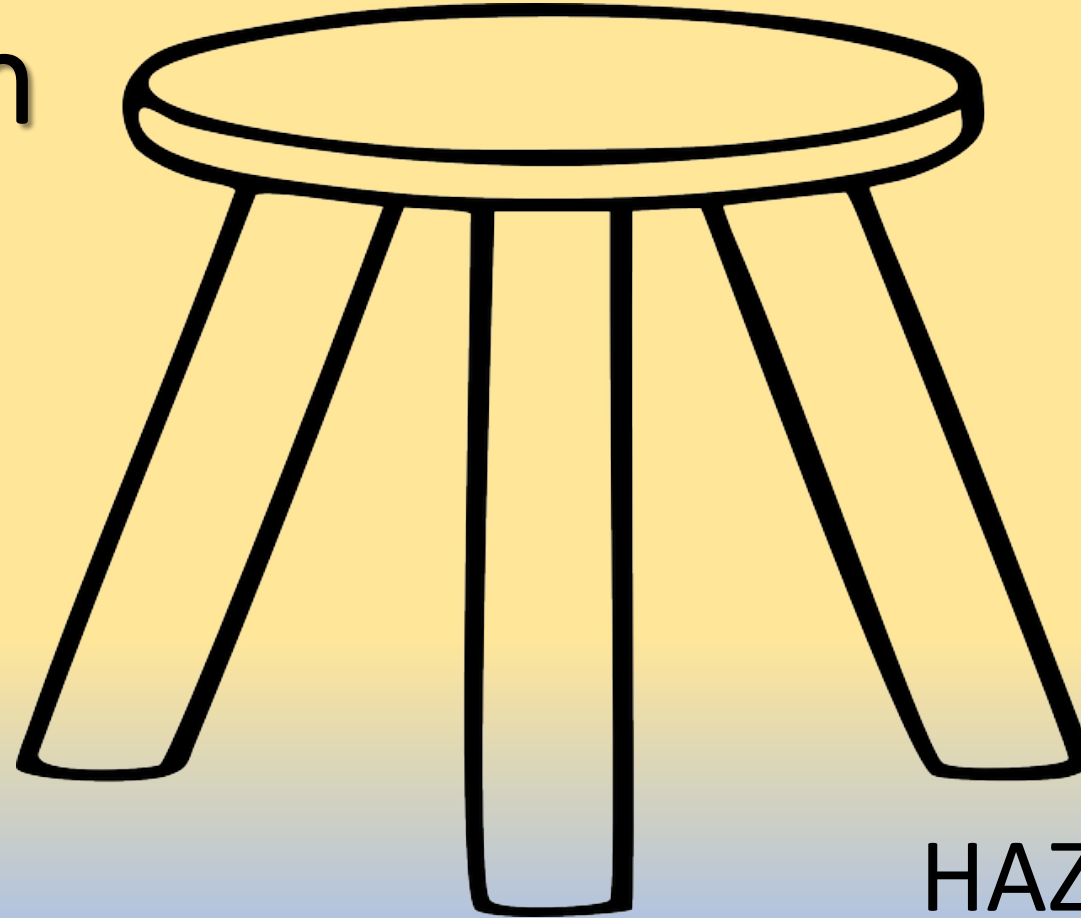
The Dark Age --- Before E-Plan 1980s

- Mailed copies of Tier II reports
- No discussions/organizing data with other Departments
- Different types of emergency plans



LEPC Solution

1990-2000



Tier II Reports
(MAILED REPORTS)

HAZMAT BOXES

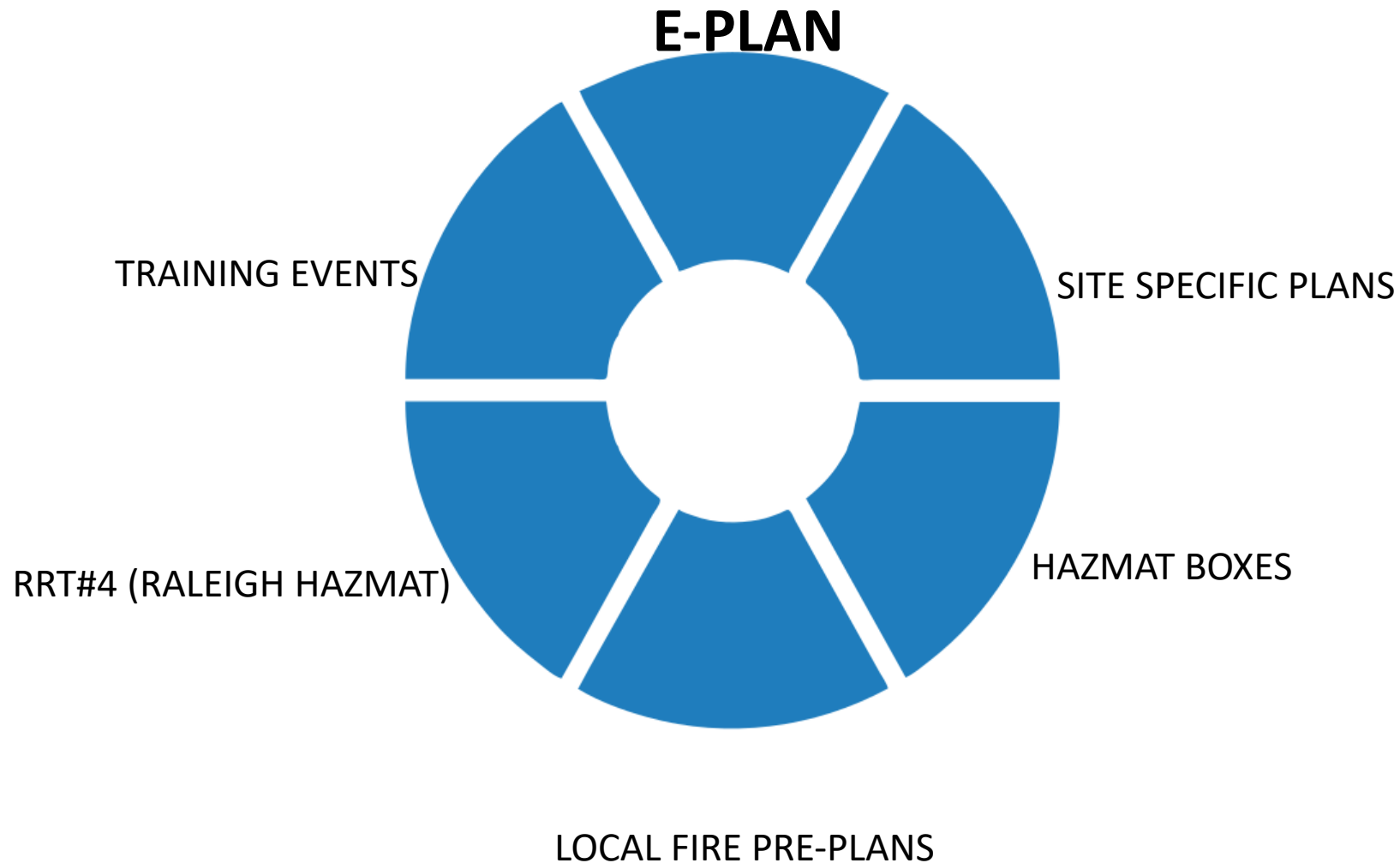
Site Specific Plans

LEPC Evolution

Tier II info. via E-Plan

E-PLAN STARTED

(submitted on-line March 1, 2010)



Tier II Reports

Facility Information




| | |
|-------------------------------|---|
| Facility | Ajinomoto Health & Nutrition N.A. Inc. Raleigh Plant |
| Company | Ajinomoto Health & Nutrition N.A., Inc |
| Filing Year | 2018 (Tier2) |
| Department | EHS |
| Address | 4020 Ajinomoto Dr Raleigh, Wake County NC - 27610 |
| Latitude | 35.77293 |
| Longitude | -78.56415 |
| USNG | 17S QV 20186 61501 |
| Location | PG - Plant Entrance (General) |
| Max occupancy | 240 (Manned) |
| Email | mcfarlandr@ajiusa.com |
| Type of Facility by Submitter | EPCRA 302 EPCRA 312 (Tier2) CAA 112 (RMP) |
| Data Management | Last modified Date: 2019-02-27 15:07:54.0 UTC First Submit Date: 2019-02-27 15:07:54.0 UTC (Tier2) Data Submitted by: Ricky J. McFarland Data Entered by: Ricky McFarland (mcfarlandr@ajiusa.com), Access ID: 1008396 Dun & Bradstreet - 099816548 - RMP - 100000036793 - NAICS - 325411 - Medicinal and Botanical Manufacturing |
| Facility Notes | Site is staffed 24/365 |

[Show Google Map](#)[Advance Google Map](#)[Printer Friendly Version](#)[Detailed View](#)[Download Tier2 Zip File](#)[Download Google Earth File](#)[Facility Weather](#)[Download Tier II Report](#)[Download All Chemical PDF](#)

Additional Reports

Facility Documents

- ☒ I have submitted a site plan.
- ☐ I have attached a description of dikes and other safeguard measures.
- ☐ I have attached a list of site coordinate abbreviations.

| File Name | File Category | Description | Upload Date or Index | Download |
|--|-------------------|----------------------------------|----------------------|---|
| Site Map- Ajinomoto AminoScience LLC.pdf | MSDS | Ajinomoto Raleigh Plant site map | 1080303 |  |
| Site Maps.pdf | Diagrams | Site Maps | 1080304 |  |
| SSP-HMMP 2019.docx | Contingency Plans | HMMP 2019 | 1080369 |  |

Emergency Plan

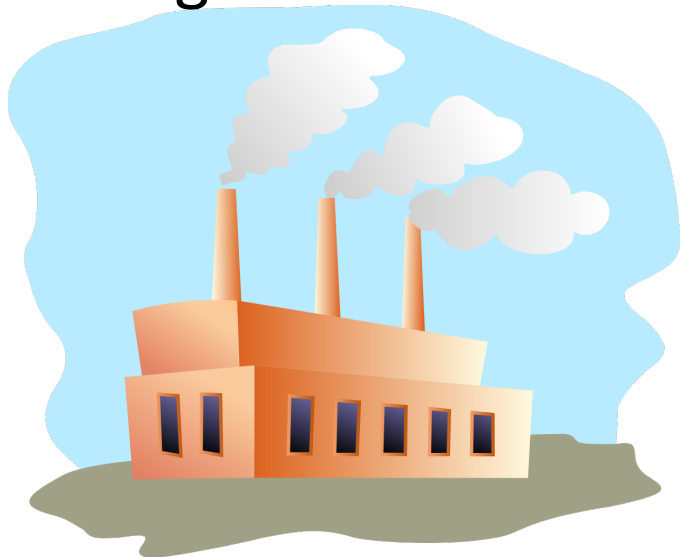
No uploaded document

Hazard Analysis

No uploaded document

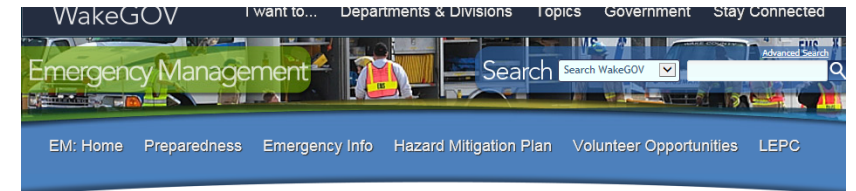
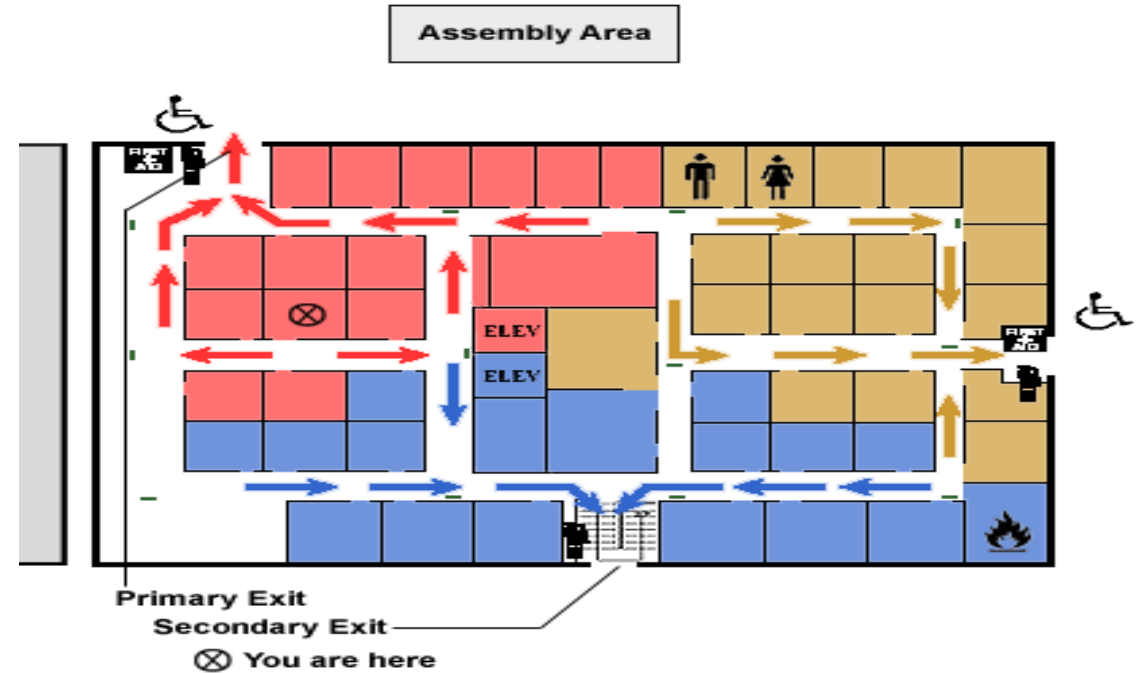
Not just Data.....Know your Industry

- WAKE COUNTY had a shift in Industry
- Textile.....Pharmaceutical/Research
- Burlington Mills.....Biogen, Ajinomoto, Pfizer, NCSU



Site Specific Plans SSP

- OSHA Emergency Action Plans
- EPA Contingency Plans
- Safety Plans
- Evacuation Plans
- NFPA
- NCDOT Hazardous Materials Management Plans



Every Five years LEPC reviews the **SSP**

www.wakegov.com/em/lepc/resources/Pages/chem_hazmatplans



Site-Specific Chemical Plans and Hazmat Management Plan

The following planning template has been developed to assist your facility in complying with the planning, prevention, control and mitigation of dangerous conditions created by the presence of hazardous materials required under the Emergency Planning and Community-Right-to-know Act of 1986 (EPCRA) and the Hazardous Materials Chapter of the North Carolina State Building Code.

Site Specific Plan & Hazardous Materials Management Plan TEMPLATE:

[Site Specific Chemical Plan](#)

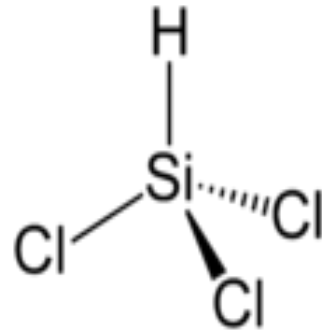
[Instruction Booklet for the Site Specific & Hazardous Materials Management Plan](#)

Published by Christopher J. Lacasse on Friday, July 07, 2017.

[Meeting Information](#)
[BEST Conference](#)
[Citizen Safety Tips](#)
[Contact Us](#)
[Federal, State & Local Regulations](#)
[Links](#)
[Resources](#)
[SARA Title III - Tier II Information](#)
[What is LEPC?](#)

SSP Allows you to Train

- Site visits..... *Foundation Medicine RTP*
- Confirm products/locations
- Safety walk throughs (*Safety Committees*)
- 911 Information
- Fire Dept. Pre-plans
- Table-Top/Functional/Full Scale



WHAT IF ???



ARE WE DOING IT RIGHT?



MAKE A Decision?

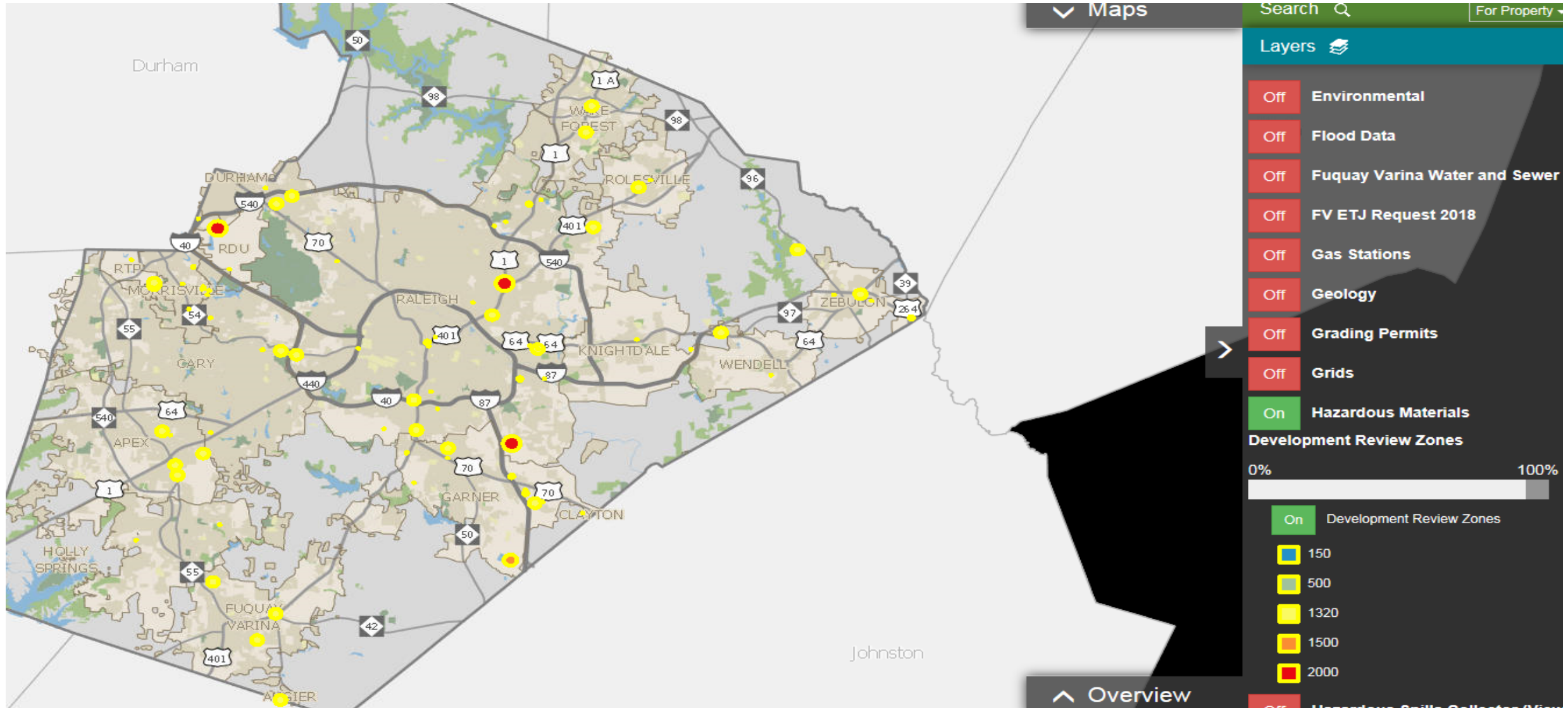
E-Plan Data For Your Responders



- Wake County has 21 Fire Service Groups/ 8 Direct Response groups
- Raleigh Fire Department Hazardous Materials Team is the primary responder for our area
- History for RFD started June 1984...ran EPA School....became the Regional Response Team (RRT 4) July 2004
- HAZMAT integrated with USAR
- E-Plan data is source for response



Land Use for Wake County (SMART GROWTH)



Phase Environmental Request

- Public Record Requests
- WAKE COUNTY GOVERNMENT
- MAKE REQUEST: August 28, 2019
- Request #19-995
- _____ is conducting an Environmental Site Assessment of the property located at 100 Glad Lake Road, Wendell, Wake County, NC.
- Any records of fires, chemical spills, hazardous materials releases, USTs, water well contamination, or other incidents of environmental concerns on or in the immediate vicinity of the property,
- **USING E-Plan database for search.....**



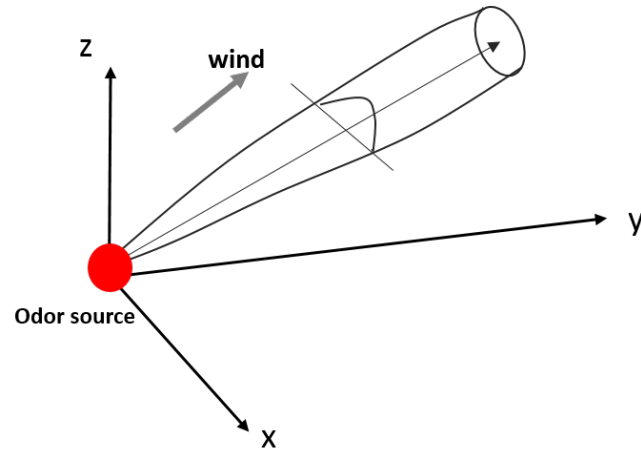
More views of the Phase I Request

- Allow you visual view the area of your search.
- Emergency Management did not find any results satisfying the search criteria. Sept 5, 2019, 8:15am by John Callaway (Staff)
- Wake County Fire Services (Prevention) has no records to return on this request.



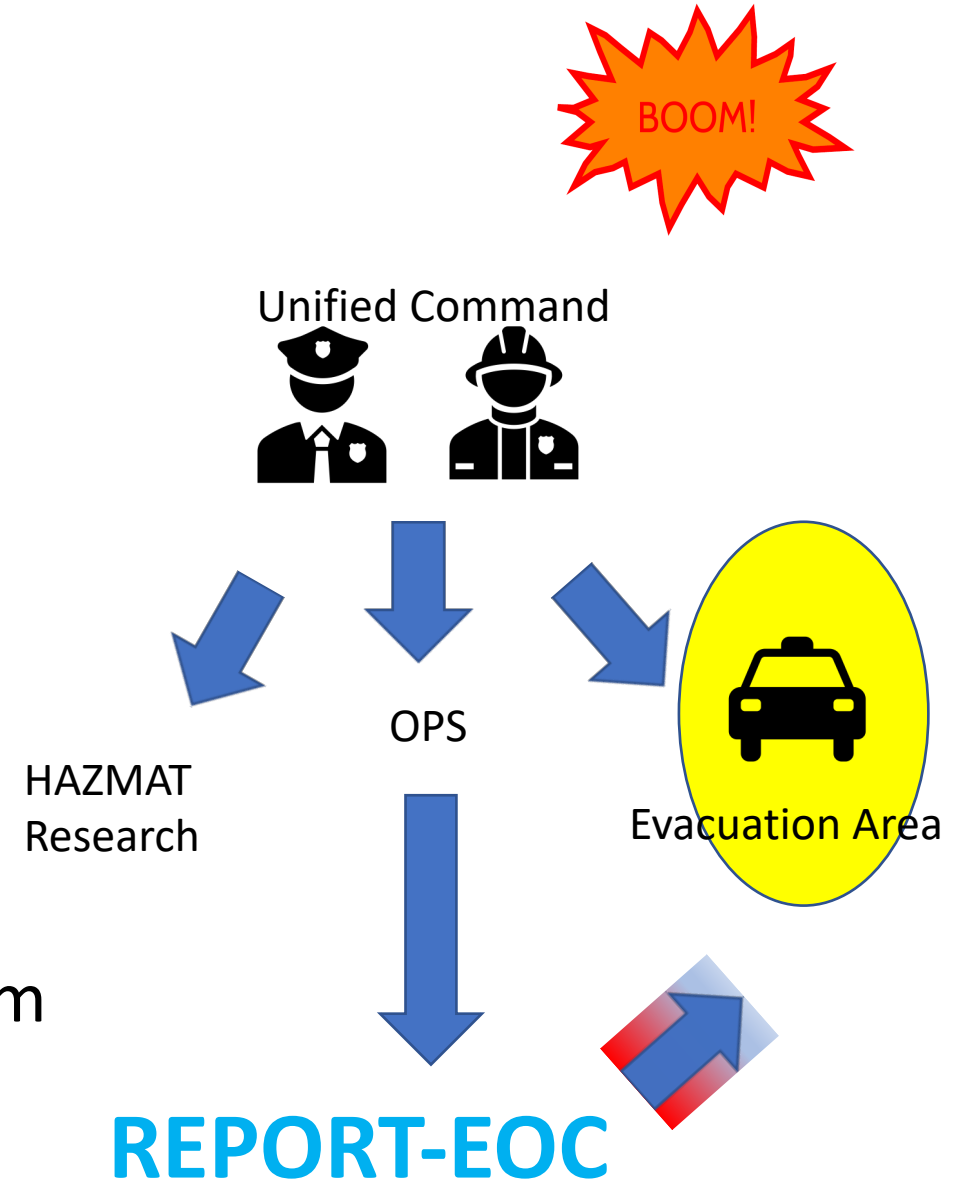
Using E-Plan

- Using E-Plan for Wake County Incidents
- Using E-Plan data for Everbridge notification
- Similar use for Reverse 911 (Local Evacuations)



➤ Using E-plan for Inspections---Fire House Program

At the Incident



Future Use for E-Plan

- Wake County responders will have access on all vehicle through Mobile Data Terminal (MDT),
- Laptops connected to E-Plan



- What about your Future uses???



DATA Searching

2 March 2019 print out (2018 data)

Total number of facilities listed:
1188 facilities....today 1212

Total number of EHS/RMP facilities:
243 facilities

Facilities of concern = 91 (require plans)

Questions about battery acid (sulfuric)

I ran a report with just propane from the total
number facilities (1188) = 117 facilities

Chemical In Facility Search

Search for a Chemical in different Facilities by giving search parameter

| | |
|---------------------------------------|---|
| Chemical | <input type="text"/> |
| CAS | <input type="text"/> |
| Facility | <input type="text"/> |
| Company | <input type="text"/> |
| Quantity(Pounds) | <input type="text" value="Any Quantity"/> |
| Quantity Greater Than Value in Pounds | <input type="text"/> |
| State | <input type="text" value="NC"/> |
| County/Parish | <input type="text" value="All"/> |
| City | <input type="text"/> |
| Zip | <input type="text"/> |
| EHS | <input checked="" type="checkbox"/> |
| Remove Batteries in Excel Report | <input type="checkbox"/> |
| Filing Type | <input type="checkbox"/> 302 <input type="checkbox"/> 311 <input type="checkbox"/> Tier2 <input type="checkbox"/> TRI <input type="checkbox"/> RMP (by Tier2 User) <input type="checkbox"/> RMP (by EPA) |
| Filing Year | <input type="text" value="All"/> |



MOST Important Customers

1. The Public & Emergency Responders
 2. Industry Workers (Right-to-Know)
 3. Evacuations/Shelter in Place for Schools, Churches, Venues
- Future Use *Request damage reports (Hurricanes)*



Don't forget other groups

- Public Health (Human Services)
- Environmental Service (Mutual Aid agreement with State)
- EOC Activation (Planning group)
- Reminding On-scene Commander
- Safety Officer additional info
- CLEANUP CONTRACTORS



PIO and News Release

2019 CLEAN-UP COMPANIES IN THE WAKE COUNTY AREA
County officials cannot recommend private vendors or services; however, a partial list of clean-up contractors operating in the area is provided below. Wake County does not regulate or participate in cost/fee negotiations for clean-up operations.

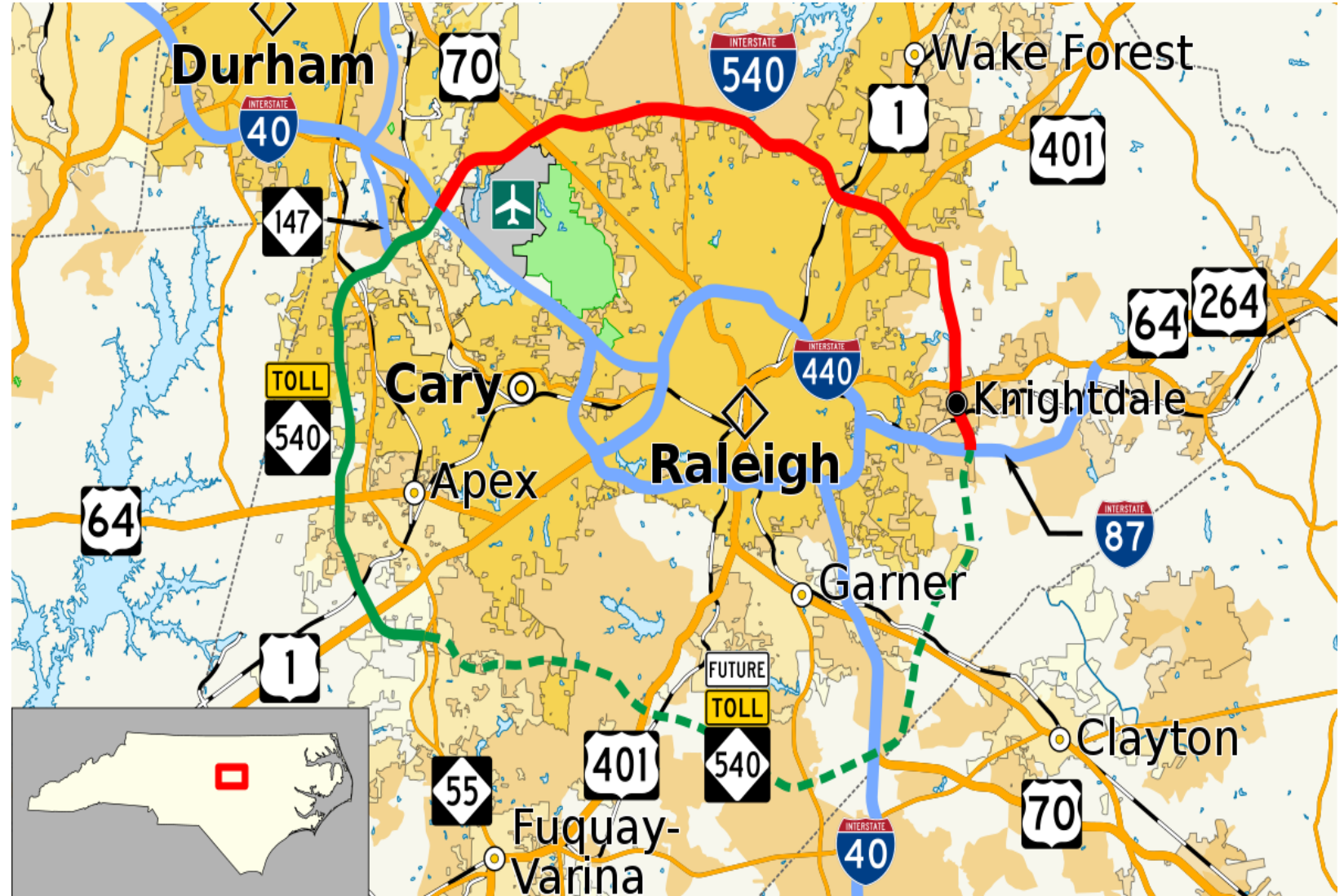
| | |
|--|---|
| Eastern Environmental Management, Inc Bill Boyer 801 Academy St. Wake Forest, NC | 866-443-2225 24 Hour (252) 972-9940 Fax |
| -Hazardous Waste Management, Emergency Spill Response, Remediation, Transportation, Environmental Services | |
| Environmental Products & Services of Vermont, Inc. Peter Marotta - Branch Manager 405 S. Rogers Lane Raleigh, NC 27610 | 800-577-4557 24 Hour (919) 852-1997 Fax |
| - Emergency Spill Response, Environmental Services, Vacuum Truck Service, Hazardous and Non-Hazardous Waste Transportation and Disposal | |
| First Call Environmental, LLC Rick Pulyer - Regional Manager 1037 Holtridge Dr. Apex, NC 27523 | 800-646-1290 24 Hour (888) 536-1352 Fax |
| -Emergency Spill Response, Remediation | |
| HEPACO, LLC Cory Hylton - Project Manager 301 Travis Park Dr. Cary, NC 27511 | 800-888-7689 24 Hour (919) 719-1609 Fax |
| - Emergency Spill Response, Environmental Services, Vacuum Truck Service, Hazardous and Non-Hazardous Waste Transportation and Disposal | |
| Highlands Environmental, Inc Joe Beaman - Principal Geologist 8410-D Falls of Neuse Rd. Raleigh, NC 27615 | 800-437-3278 24 Hour (919) 848-4265 Fax |
| -Emergency Spill Response, Remediation, Containment, Air Monitoring | |

CONTINUED ON BACK

S:\LEPC\Clean Up Contractor docs\2019 Clean up Companies\Wake Cleanup Companies Jan 2019.doc
As of January 2019

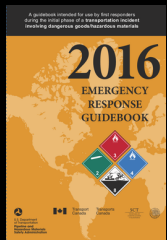
Commodity Flows 51% versus 49% (Fix sites)

- Pipelines
- Large Holding Tanks
- Road system
- Rails



Other Materials support E-plan

- Special facilities may not report via E-plan but the process stills work!
- US Postal distribution Center (EXAMPLE)
- RMP Facilities (Wake County has 6)
- Hazardous Waste Contingency Plans (WCP)



ANY QUESTIONS ???

BEST Conference 20 Feb 2020, Raleigh NC





THE END

John Callaway



331 S. McDowell Street
Raleigh, NC 27602
Cell 919-795-5105
jcallaway@wakegov.com