

HAZMAT RESPONSE:

THERE IS NO SUCH THING
AS AN UNKNOWN

SCOTT CHAPPELL

FLORIDA USE&R/HAZMAT PROGRAM COORDINATOR

(RET.)





CAREER - FD & HAZMAT



REGULATIONS AND COMPLIANCE

- EPCRA
- OSHA
- ENGINEERING
- REPORTING
- TRAINING
- MSDS



TRAINING

ADULT HUMANS (SHOULD) HAVE 32 TEETH

WHAT IS THE FASTEST YOU CAN BECOME A DENTAL HYGIENIST?

THE MINIMUM LEVEL OF EDUCATION DEGREE FOR A DENTAL HYGIENIST IS AN ASSOCIATE'S DEGREE, THOUGH BACHELOR'S AND MASTER'S DEGREES ARE ALSO OPTIONS FOR THOSE WHO WANT TO MOVE UP IN THE FIELD. THE LENGTH OF TIME IT TAKES TO COMPLETE YOUR EDUCATION DEPENDS ON THE DEGREE YOU CHOOSE. THE TYPICAL TIME FRAME IS TWO TO FOUR YEARS.

TRAINING - HOW MANY CHEMICALS EXIST?

- HAZMAT RESPONSE
- HAZMAT IN INDUSTRY



Labels, Placards & Markings

Labels				Placards		
DOT Hazard Class labels are required on all packages containing hazardous materials. Labels must measure at least 100mm x 100mm and comply with the labeling section in 49 CFR, Part 172.400.	Subsidiary Risk Materials which meet the definition of more than one hazard class must display labels that correspond to both the primary and subsidiary hazard.	International Text is not required on primary or subsidiary hazard labels in Classes 1, 2, 3, 4, 5, 6 or 8. These wordless labels may be used to ship domestically as well as internationally.	Shipping Name Labels must be affixed to the surface (other than the bottom) of a package, and be located on the same surface near the proper shipping name marking. Labels meet both labeling (172.400) and marking requirements (172.500) of CFR.	Worded Bulk packaging, freight containers, unit load devices, transport vehicles and rail cars must be placarded on each side and each end with a minimum 250mm x 250mm placard as shown in 49 CFR, Part 172.500.	Bulk Packaging Must be marked with a placard and the 4-digit identification number specified for the material. The numbers should measure 89mm and may be displayed across the center area of the placard.	International Wordless For other than Class 7 and the Oxygen placards, text indicating a hazard is not required. Wordless placards may be used for domestic as well as international shipments.

Labels

CLASS 1 	CLASS 2 	CLASS 4 	CLASS 6 	CLASS 8 	Air Labels and Markings
CLASS 3 	CLASS 5 	CLASS 7 	CLASS 9 	Additional Labels and Markings 	

Placards

CLASS 1 	CLASS 2 	CLASS 4 	CLASS 6 	CLASS 8 	IMO Markings
CLASS 3 	CLASS 5 	CLASS 7 	CLASS 9 	Other Markings 	

RISK VS REWARD

- FIREFIGHTING
- SEARCH AND RESCUE
- HAZARDOUS MATERIALS RESPONSE



MEETING EXPECTATIONS

"OUR DEPARTMENT TAKES 1,120 CALLS EVERY DAY. DO YOU KNOW HOW MANY OF THE CALLS THE PUBLIC EXPECTS PERFECTION ON? 1,120. NOBODY CALLS THE FIRE DEPARTMENT AND SAYS, 'SEND ME TWO DUMB-ASS FIREMEN IN A PICKUP TRUCK.' IN THREE MINUTES THEY WANT FIVE BRAIN-SURGEON DECATHLON CHAMPIONS TO COME AND SOLVE ALL THEIR PROBLEMS."

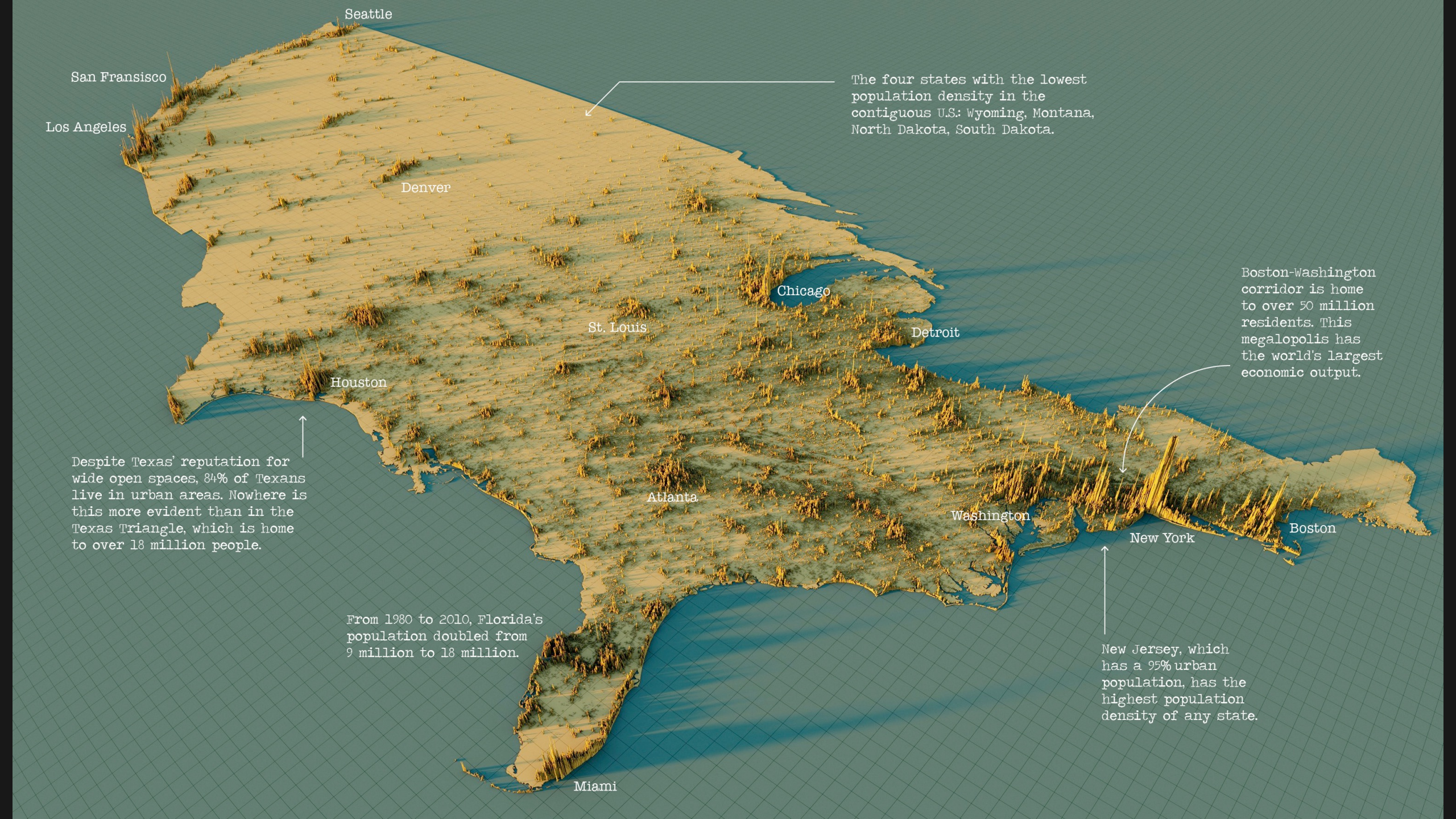
-JOHN EVERSOLE, CHICAGO FIRE DEPARTMENT

GO BIG, GO FAST, GO SMART

-CRAIG FUGATE

FEMA DIRECTOR 2009-2017

FL DIRECTOR OF EM 2001-2007



Seattle

San Francisco

Los Angeles

Denver

Chicago

St. Louis

Detroit

Houston

Atlanta

Washington

New York

Boston

Miami


The four states with the lowest population density in the contiguous U.S.: Wyoming, Montana, North Dakota, South Dakota.

Boston-Washington corridor is home to over 50 million residents. This megalopolis has the world's largest economic output.

Despite Texas' reputation for wide open spaces, 84% of Texans live in urban areas. Nowhere is this more evident than in the Texas Triangle, which is home to over 18 million people.

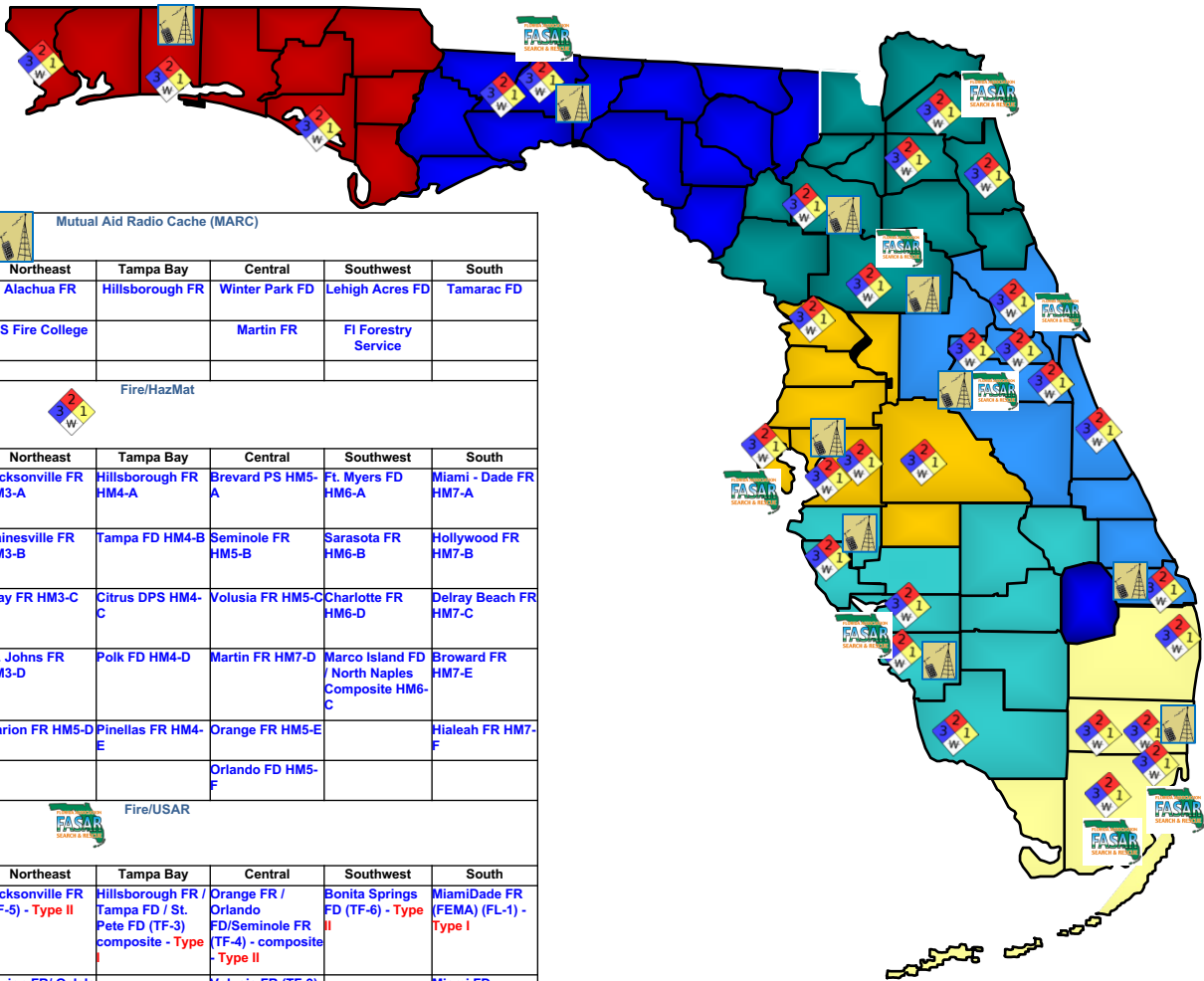
From 1980 to 2010, Florida's population doubled from 9 million to 18 million.

New Jersey, which has a 95% urban population, has the highest population density of any state.

An aerial photograph of the state of Florida, showing its coastline and major cities. The image is overlaid with a light blue grid pattern. The text is positioned on the left side of the state, and the word 'Miami' is located at the bottom right, near the tip of the peninsula.

From 1980 to 2010, Florida's
population doubled from
9 million to 18 million.

Miami



Mutual Aid Radio Cache (MARC)						
Northwest	North	Northeast	Tampa Bay	Central	Southwest	South
Ocean City - Wright FD	Tallahassee FD	Alachua FR	Hillsborough FR	Winter Park FD	Lehigh Acres FD	Tamarac FD
		FS Fire College		Martin FR	Fl Forestry Service	
Fire/HazMat						
Northwest	North	Northeast	Tampa Bay	Central	Southwest	South
Okaloosa Special Ops HM1-A	Tallahassee FD Team-1 HM2-A	Jacksonville FR HM3-A	Hillsborough FR HM4-A	Brevard PS HM5-A	Ft. Myers FD HM6-A	Miami - Dade FR HM7-A
Bay County FR HM1-B	Tallahassee FD Team-2 HM2-A	Gainesville FR HM3-B	Tampa FD HM4-B	Seminole FR HM5-B	Sarasota FR HM6-B	Hollywood FR HM7-B
Escambia County FR HM1-C		Clay FR HM3-C	Citrus DPS HM4-C	Volusia FR HM5-C	Charlotte FR HM6-D	Delray Beach FR HM7-C
		St. Johns FR HM3-D	Polk FD HM4-D	Martin FR HM7-D	Marco Island FD / North Naples Composite HM6-C	Broward FR HM7-E
		Marion FR HM5-D	Pinellas FR HM4-E	Orange FR HM5-E		Hialeah FR HM7-F
				Orlando FD HM5-F		
Fire/USAR						
Northwest	North	Northeast	Tampa Bay	Central	Southwest	South
No Teams	Tallahassee FD (TF-7) - Type III	Jacksonville FR (TF-5) - Type II	Hillsborough FR / Tampa FD / St. Pete FD (TF-3) composite - Type I	Orange FR / Orlando FD/Seminole FR (TF-4) - composite - Type II	Bonita Springs FD (TF-6) - Type II	Miami/Dade FR (FEMA) (FL-1) - Type I
		Marion FR/ Ocala FD/ Gainesville FR (TF-8) - composite - Type III		Volusia FR (TF-9) - Type III		Miami FD (FEMA) (FL-2) - Type I
		Florida State Fire College - Logistical support				

"RESPOND REFERENCE HAZMAT - UNKNOWN CHEMICAL SPILL"

- WHAT DO WE KNOW VS WHAT IS UNKNOWN?
- HOW CAN WE NARROW?
- IS IT REALLY AN UNKNOWN?

CATASTROPHIC PLANNING HURRICANE ONO

- THREE FL "LANDFALLS"
- 4.5 MILLION FLORIDIANS IMPACTED
- 1 MILLION STRUCTURES DAMAGED OR DESTROYED
- ~60,000 USE&R PERSONNEL NEEDED



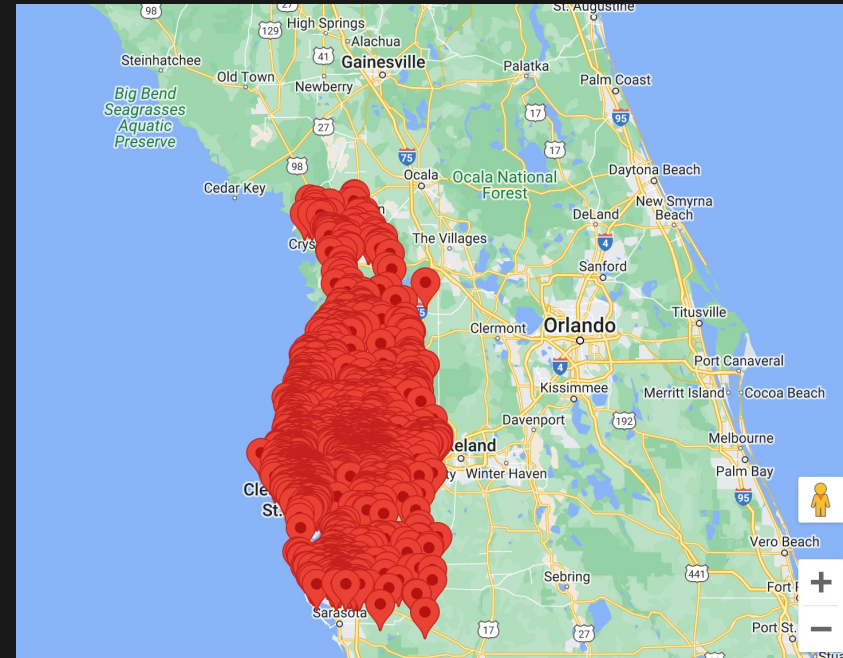
HAZMAT IN DISASTER RESPONSE

- CAPABILITY VS CAPACITY



WHERE CAN WE FIND ADDITIONAL INFO?

- E-PLAN
 - TAMPA BAY LEPC





[Home](#)

[Maintain Account](#)

Search Functions

[Facility Search](#)

[Facility Chemical Search](#)

[Chemical Search](#)

[Facility Visual Search](#)

[Authorized Users](#)

[E-Plan Online Training](#)

[E-Plan Online Filing \(Tier2\)](#)

[E-Plan News](#)

[EPCRA Title III Consolidated List of Lists](#)

[EPA Tier2 Submit](#)

[Weather](#)

[Other Important Links](#)

[Facility Information](#)

[Contact Information](#)

[Chemical Inventory](#)

[EPCRA 304 Report](#)

[Additional Information**](#)

[StateFields](#)

Facility Information

Facility **Anuvia Plant City, LLC**
Company **Anuvia Plant Nutrients**
Filing Year 2022 (Tier2)
Department
Address 660 E County Line Rd.
 Plant City, Hillsborough County
 FL - 33810

Latitude 28.0905324
Longitude -82.0830
USNG 17R LM 93602 07705
Location Information not available
Max occupancy 85 (**Manned**)
Emergency 24-Hour Phone Number 813-833-9808
Email Information not available
Type of Facility by Submitter **EPCRA 302**
EPCRA 311
EPCRA 312 (Tier2)
EPCRA 313 (TRI)
CAA 112 (RMP)

Data Management Last modified Date: 2023-05-11 16:07:36.0 UTC

First Submit Date: 2023-02-27 18:49:36.0 UTC (Tier2)

Data Submitted by: **Phillip Thomley, Plant Manager**

Data Entered by: **Jason Lichtenstein**(jlichtenstein@anuvianutrients.com), Access ID: **1071084**

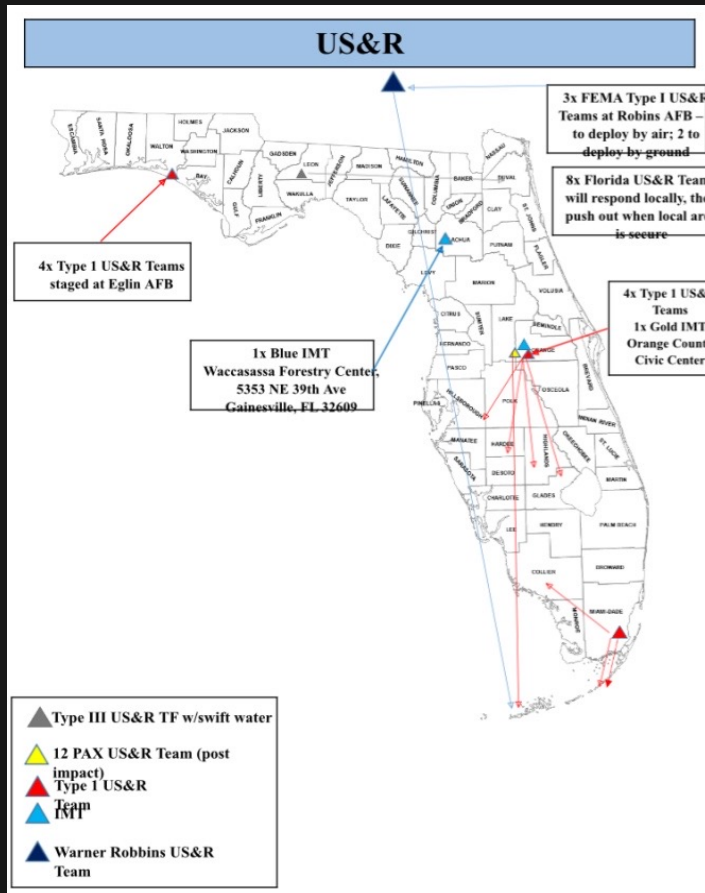
Dun & Bradstreet - N/A -
TRI - 3356WNVPLN66ECU - TRI Identification Number
Florida Facility ID - 51235 - Florida SERC Number

Chemical (Click for ERG link)	CAS #	Max Qty.	Avg Qty.	Max Amount in largest container (lbs)	NFPA Code H F R S	Properties	Fact Sheets
AMMONIA (ANHYDROUS) (EHS Chemical) Show Chemical Plume	7664-41-7	1,058,218	74,487	352,740	3 1 0 -	Pure Liquid Gas EHS	SDS MSDS Profile CHRIS
Physical Hazard: Flammable (gases, aerosols, liquids, or solids) Corrosive to metal Gas under pressure (compressed gas)		Health Hazard: Acute toxicity (any route of exposure) Skin corrosion or irritation Serious eye damage or eye irritation Respiratory or skin sensitization					
Synonyms: Am-foI;Ammonia;Ammonia (anhydrous);Ammonia (anhydrous) (liquefied);Ammonia, [anhydrous];Ammonia, anhydrous;Ammonia, anhydrous, liquefied;Ammonia gas;Ammonia solution, with more than 50% ammonia;Ammonia-14n;Ammoniac, anhydre (dot french);Ammonia;							
Storage Locations	Type	Pressure	Temperature				
1 North Tank farm, bullets	Cylinder	Greater than ambient pressure	Less than ambient temp. / not cryog				
Asphalt (dustrol 3666)	8052-42-4	130,265	130,265	130,265	0 1 0 -	Mixture Liquid	MSDS Profile CHRIS
Physical Hazard:		Health Hazard: Respiratory or skin sensitization					
Synonyms: Ac 10;Ac 10 (asphalt);Ac 20;Ac 20 (asphalt);Ac 3;Ac 3 (asphalt);Ac 8;Ac 8 (asphalt);Aqua brown b-a;Aqua brown b-k;Ar 1000;Asfalto (dot spanish);Asphalt;Asphalt (typical);Asphalt: asphaltum;Asphalt blending stocks: roofers flux;Asphalt ble;							
Storage Locations	Type	Pressure	Temperature				
1 South Tank Farm	Above ground tank	Ambient pressure	Greater than ambient temperature				
Component Name	CAS No	Percentage	Max Code	NFPA Codes	Fact Sheets		
Water, Asphalt, fatty acid residue	7732185	60.0 weight	10	0 1 0 -	SDS MSDS Profile		

WHERE ELSE CAN WE GET INFO ON THE "UNKNOWN CHEMICAL"

- FACILITY MANAGER
- DRIVER
- TRAIN CONDUCTOR/ENGINEER
- PIPELINES

HURRICANE IRMA (2017)



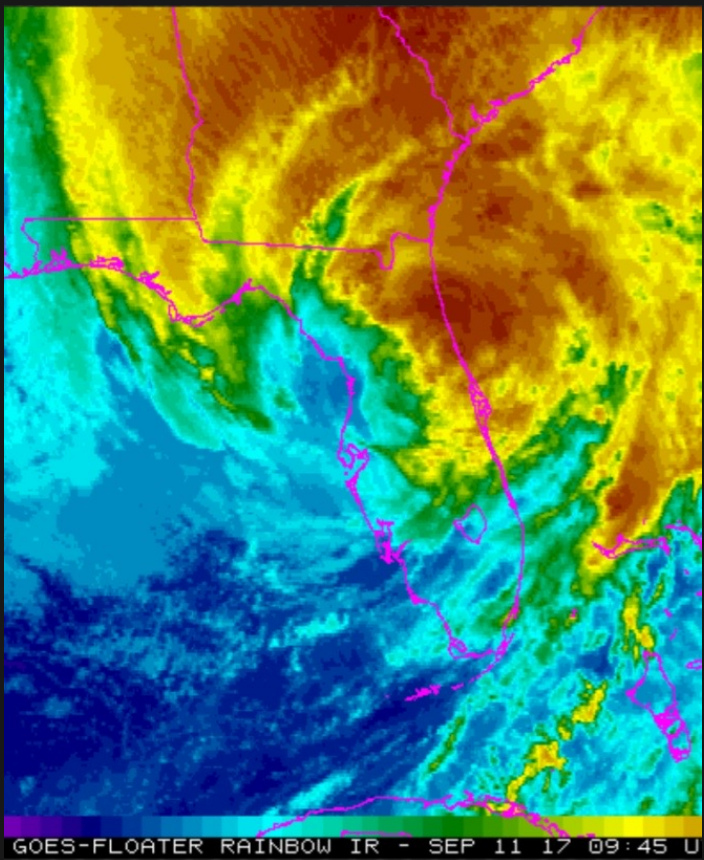
- 19 US&R TFS
- 8 FL US&R TFS
- 11 EMAC AND FEMA US&R TF

- 2 TYPE I IMT

- FEMA IST



HURRICANE IRMA (2017)



HURRICANE MICHAEL (2018)



Mexico Beach, FL

- 22 USER TFS
 - 8 FL USER TFS
 - 4 EMAC USER TF
 - 10 FEMA USER TFS
- 4 EST/TRT
- TYPE I USER IMT
- FEMA IST



HURRICANE DORIAN (2019)



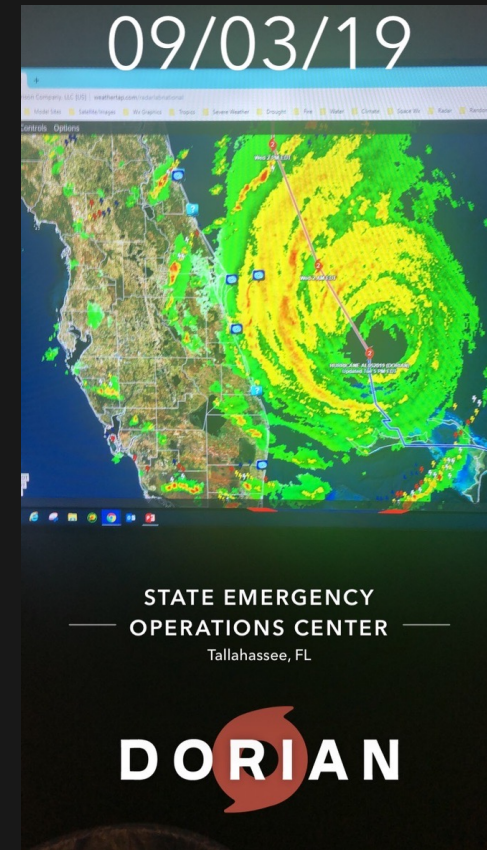
- 40 US&R TFS
- 8 FL US&R TFS
- 16 EMAC US&R TFS
- 16 FEMA US&R TFS

• 2 HSART

• 5 TRT

• TYPE I US&R IMT

• FEMA IST



SURFSIDE (2021)

FLORIDA USER RESPONSE:

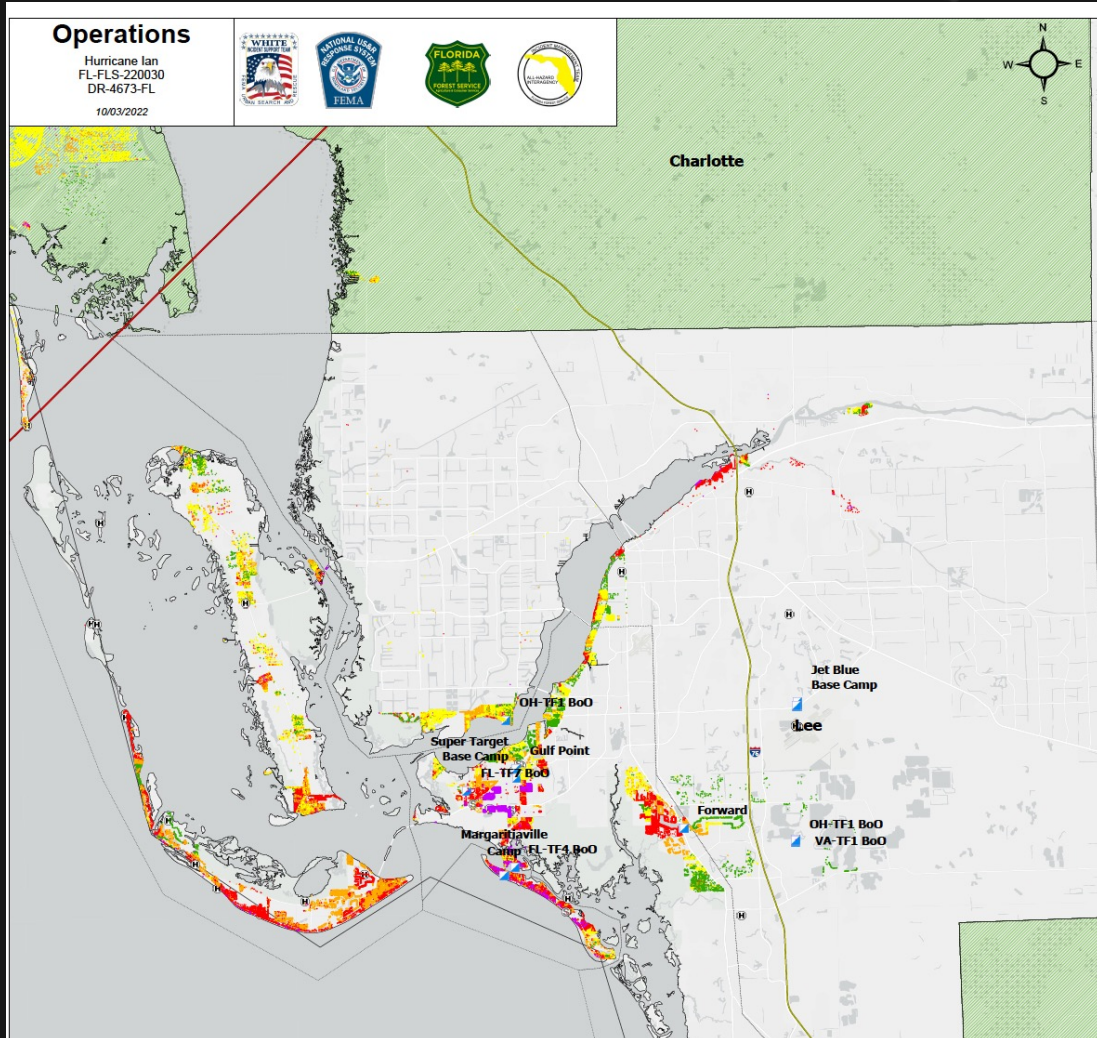
FL-TF1, TYPE II - 80 PAX
FL-TF2, TYPE II - 80 PAX
FL-TF3, TYPE II - 80 PAX
FL-TF4, TYPE III - 40 PAX
FL-TF5, TYPE II - 80 PAX
FL-TF6, TYPE III - 40 PAX
FL-TF7, TYPE IV - 25 PAX
FL-TF8, TYPE IV - 25 PAX

FEMA USER RESPONSE:

VA-TF2, TYPE I - 80 PAX
PA-TF1, TYPE I - 80 PAX
OH-TF1, TYPE I - 80 PAX
IN-TF1, TYPE I - 80 PAX
NJ-TF1, TYPE I - 80 PAX

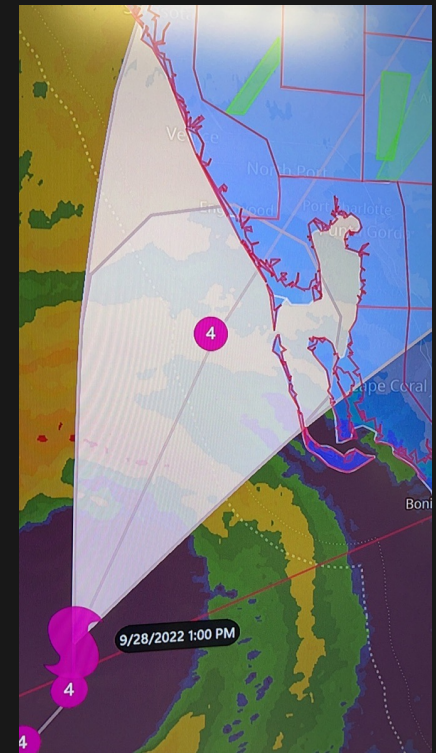


HURRICANE IAN (2022)



- 19 US&R TFS
- 6 FL US&R TFS (+1)
- 12 FEMA US&R TFS

- FL-TF1 - ADASR
- 1 TRT
- TYPE I US&R IMT
- FEMA IST

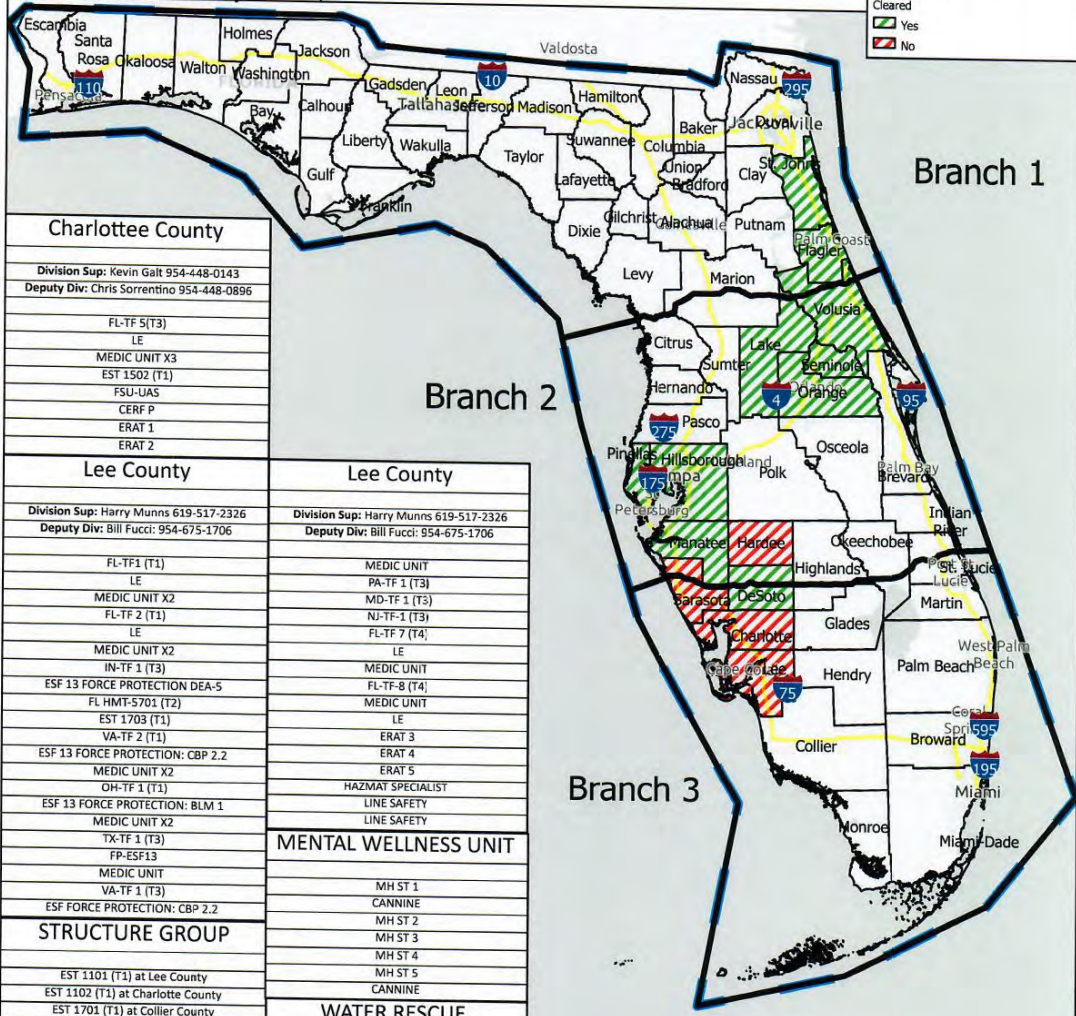


IAP Map
Hurricane Ian
FL-FLS-220030
DR-4673-FL
10/02/2022 Day



Legend

- 2022 Hurricane Ian Incident Area
- Branches
- Florida Counties
- Interstates
- County Status
- Cleared
- Yes
- No



Charlotte County

Division Sup: Kevin Galt 954-448-0143
 Deputy Div: Chris Sorrentino 954-448-0896

FL-TF 5(T3)
LE
MEDIC UNIT X3
EST 1502 (T1)
FSU-IAS
CERF P
ERAT 1
ERAT 2

Lee County

Division Sup: Harry Munns 619-517-2326
 Deputy Div: Bill Fucci: 954-675-1706

FL-TF1 (T1)
LE
MEDIC UNIT X2
FL-TF 2 (T1)
LE
MEDIC UNIT X2
IN-TF 1 (T3)
ESF 13 FORCE PROTECTION DEA-5
FL HMT-5701 (T2)
EST 1703 (T1)
VA-TF 2 (T1)
ESF 13 FORCE PROTECTION: CBP 2.2
MEDIC UNIT X2
OH-TF 1 (T1)
ESF 13 FORCE PROTECTION: BLM 1
MEDIC UNIT X2
TX-TF 1 (T3)
FP-ESF13
MEDIC UNIT
VA-TF 1 (T3)
ESF FORCE PROTECTION: CBP 2.2

Lee County

Division Sup: Harry Munns 619-517-2326
 Deputy Div: Bill Fucci: 954-675-1706

MEDIC UNIT
PA-TF 1 (T3)
MD-TF 1 (T3)
NJ-TF 1 (T3)
FL-TF 7 (T4)
LE
MEDIC UNIT
FL-TF-8 (T4)
MEDIC UNIT
LE
ERAT 3
ERAT 4
ERAT 5
HAZMAT SPECIALIST
LINE SAFETY
LINE SAFETY

STRUCTURE GROUP

EST 1101 (T1) at Lee County
EST 1102 (T1) at Charlotte County
EST 1701 (T1) at Collier County
EST 1702 (T1) at Collier County
EST 1301 (T1) at Lee County
EST 1401 at FSWU College
EST 1501 (T1) at Sarasota County
EST 1601 at Lee County
TX EST 187 (T1) at OCCC
WTST 4601 at Lee County
WTST 4101 at Sarasota County
MARC-3 at OCCC
LTRT 425 (TRT2) at OCCC

HAZMAT GROUP

FL HM-7E (T2) at Fort Myers

MENTAL WELLNESS UNIT

MH ST 1
CANNINE
MH ST 2
MH ST 3
MH ST 4
MH ST 5
CANNINE

WATER RESCUE

MO-TF 1 (T3)
MA-TF 1 (T3)
NY-TF 1 (T3)
8 LMTV
IN-TF 1 SWIFT WATER

Sarasota County

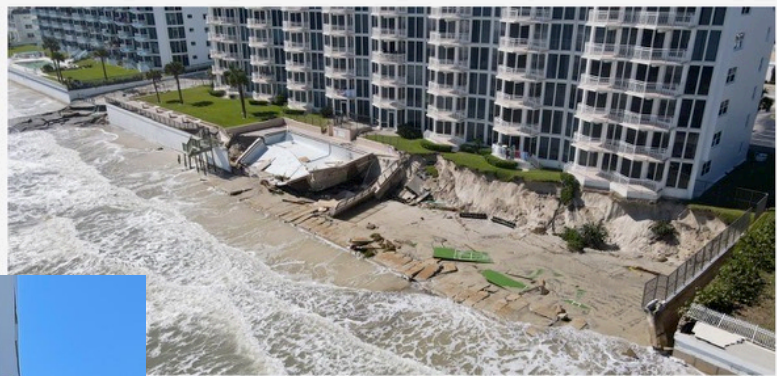
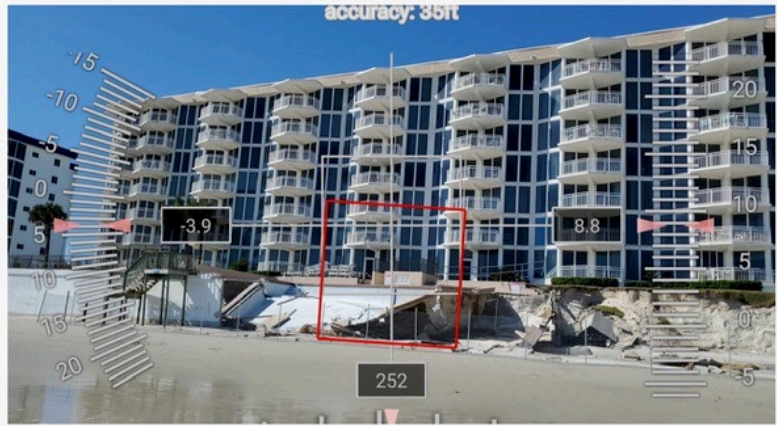
FL TF-4
AMB

Straits of Florida

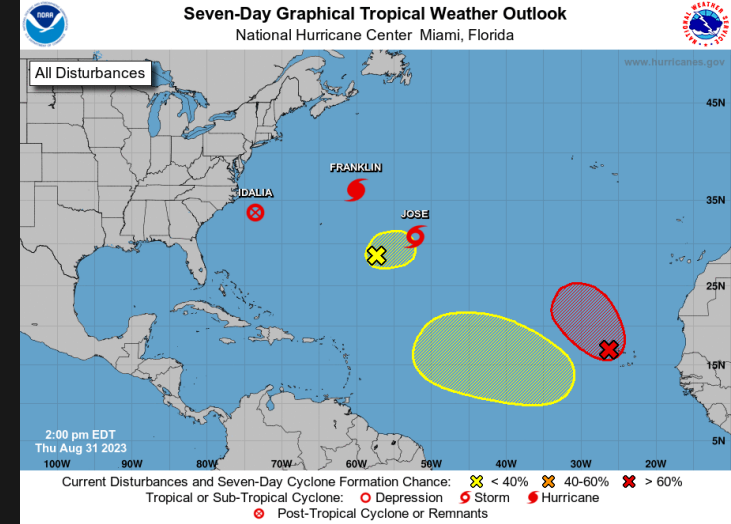
0 30 60 120 Miles

S. Kergel
 10/1/2022 2045
 North American 1983 HARN Datum.
 Lat/Long Grid

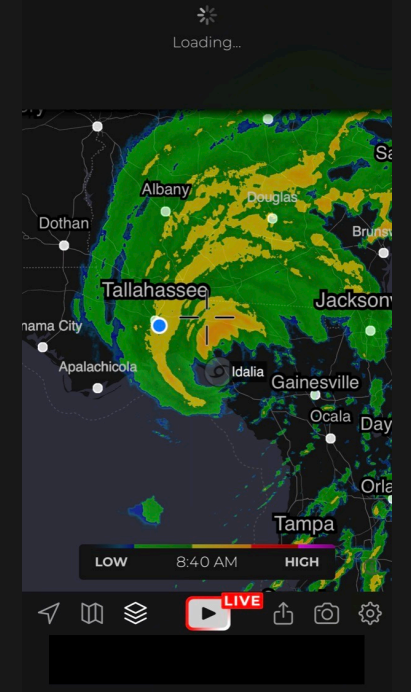
FDEP, Esri, HERE, Garmin, FAO, NOAA, USGS, EPA, NPS



HURRICANE IDALIA (2023)



- 13 US&R TFS
- 7 FL US&R TFS (+1)
- 6 FEMA US&R TFS
- FL ESF 4/9 IST
- FEMA IST



AUG 31 THU
 16:56 17:56 21:56
 CENTRAL EASTERN ZULU

FLORIDA USAR
 FEMA USAR TFS
 VA TF1 Type I
 VA TF2 Type I
 PA TF1 Type III
 MO TF1 Type III
 TX TF1 Type III
 TN TF1 Type III

FL TF1 Type I
 FL TF2 Type I
 FL TF3 RED
 FL TF4 Type III
 FL TF5 Green
 FL TF6 Type III
 FL TF7 Green
 FL TF8 Green

Branch III Reg 2
 Branch I Reg 6
 Branch I Reg 6

ORLANDO
 PENSACOLA
 28 Pax

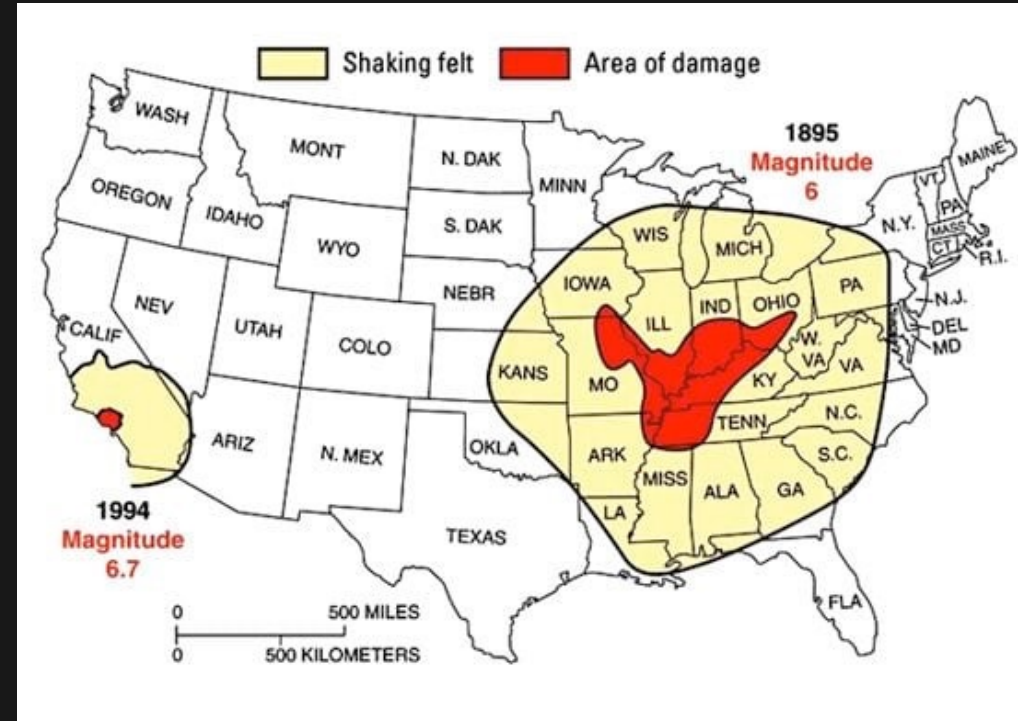
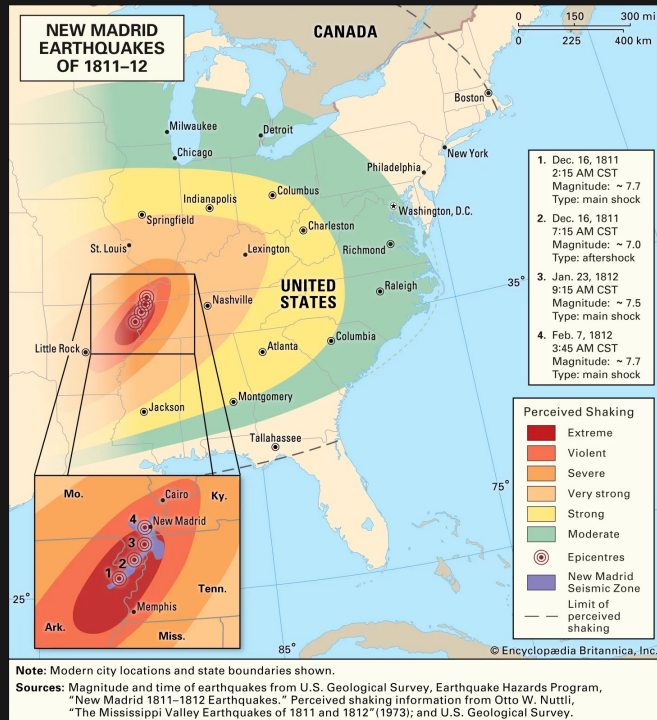
STATE OF FLORIDA
 FLORIDA STATE EMERGENCY RESPONSE TEAM (SERT)

WHO KNOWS WHAT CHEMICALS ARE WHERE?

- FACILITY MANAGER
- DRIVER
- TRAIN CONDUCTOR/ENGINEER
- PIPELINES

USE OF INDUSTRY AS FORCE MULTIPLIERS FOR HAZMAT RESPONSE

CATASTROPHIC PLANNING NEW MADRID FAULT LINE



MATTHEW CLUTTER, A FEDERAL EMERGENCY MANAGEMENT AGENCY OPERATIONAL PLANNER, SAID A MAGNITUDE 7.7 EARTHQUAKE IN THE NEW MADRID ZONE COULD DISPLACE NEARLY 850,000 PEOPLE IN UP TO EIGHT STATES. WITH ROADS AND BRIDGES COMPROMISED, EMERGENCY AID MIGHT BE CUT OFF FROM THE IMPACTED AREAS DUE TO ROAD AND BRIDGE DAMAGE.

FAILURE IS NOT AN OPTION

"TRAIN TRUSTED PROFESSIONALS CAPABLE OF ADAPTING AND WINNING IN A COMPLEX WORLD"

-FLNG NCO BASIC LEADERSHIP SCHOOL

NO ONE IS COMING - IT IS UP TO US

GO BIG, GO FAST, GO SMART

SCOTT H CHAPPELL

LEADERSHIP | COMMAND AND CONTROL | RAPID DECISION MAKING

INCIDENT MANAGEMENT | DISASTER MANAGEMENT

CONSULTING | COACHING | MENTORSHIP | PUBLIC SPEAKING

FloridaUSAR@gmail.com | 352.235.6279 | Scott H Chappell, Inc