

A photograph of an industrial facility, likely a water treatment plant, during sunset. The sky is a mix of light blue and orange. Several tall, cylindrical towers are visible, with some lights glowing on their sides. In the foreground, there are various pipes, walkways, and a large, rounded structure. The overall scene is hazy and atmospheric.

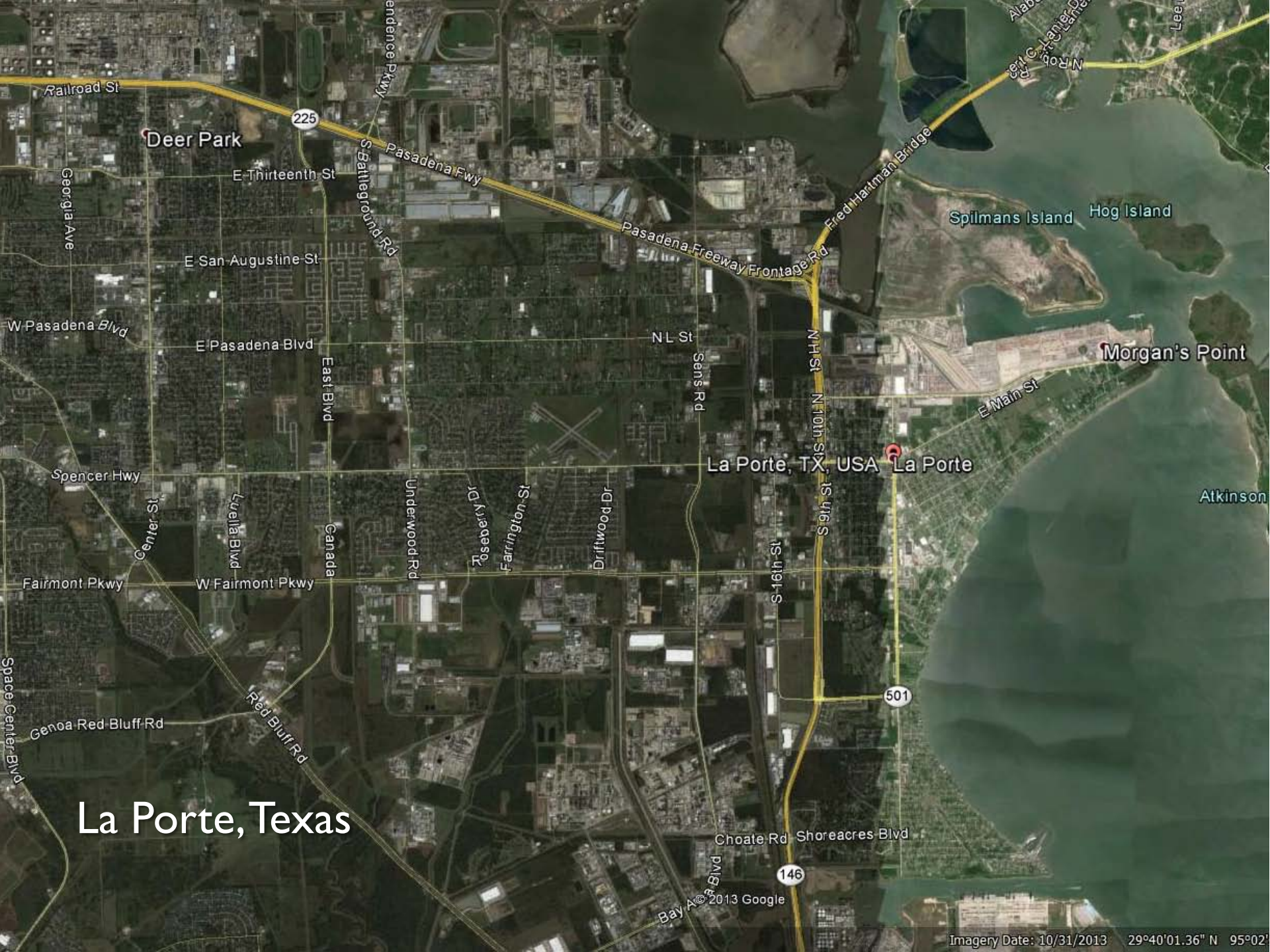
The Power of Collaboration: Working with LEPC's

Jeff Suggs, CEM
Emergency Management Coordinator
City of La Porte

Intro

La Porte:

- ▶ Located in Harris County, on Galveston Bay
- ▶ Entrance to the Houston Ship Channel
- ▶ 2 ports; one to the north and south
- ▶ Numerous bayous and tributaries
- ▶ 7-26' above sea level
- ▶ State critical infrastructure
- ▶ 35,000 residents
- ▶ Over 60 member facilities in the La Porte, Morgan's Point and Shoreacres Local Emergency Planning Committee.



Deer Park

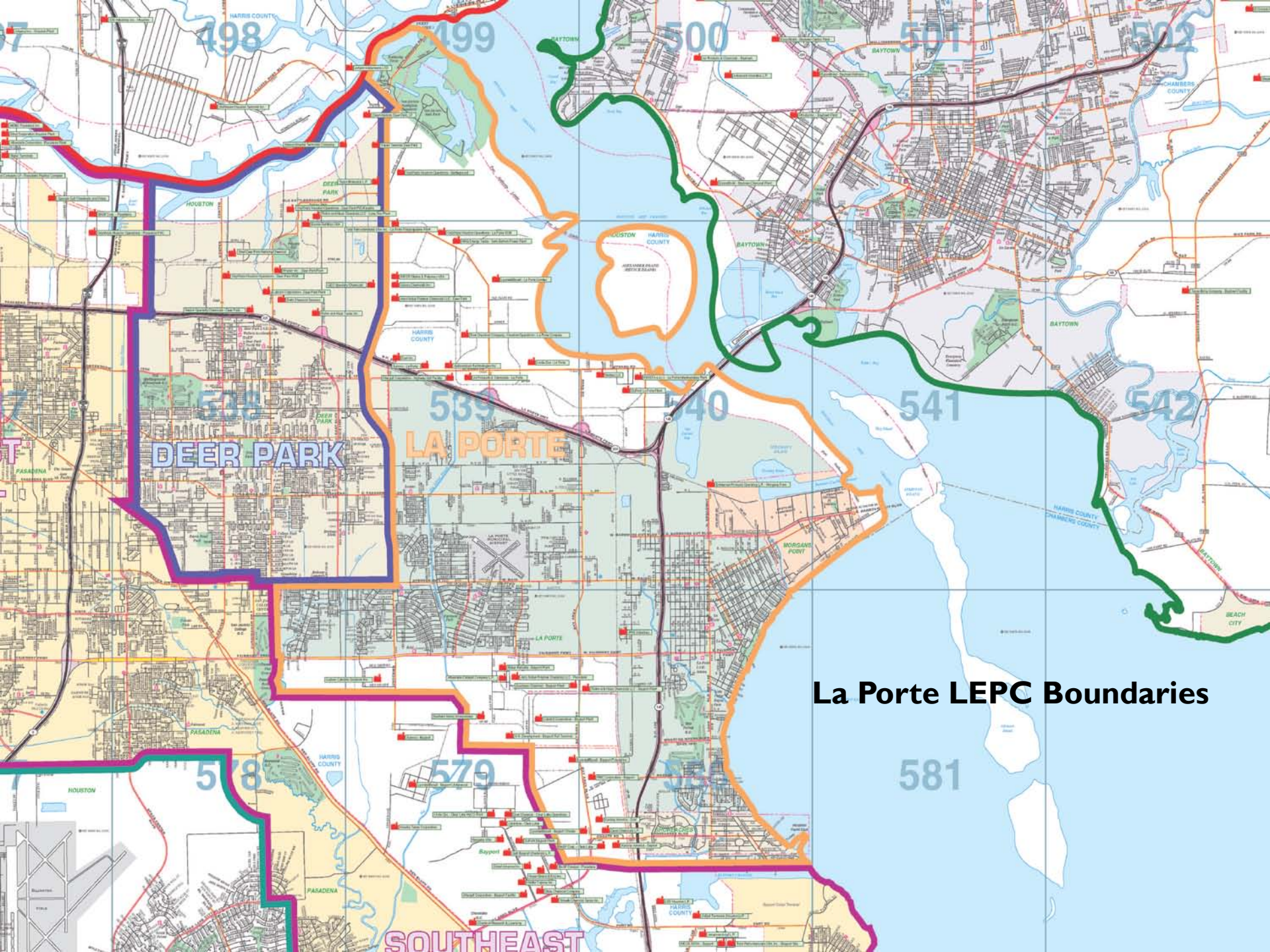
La Porte, TX, USA

501

146

225

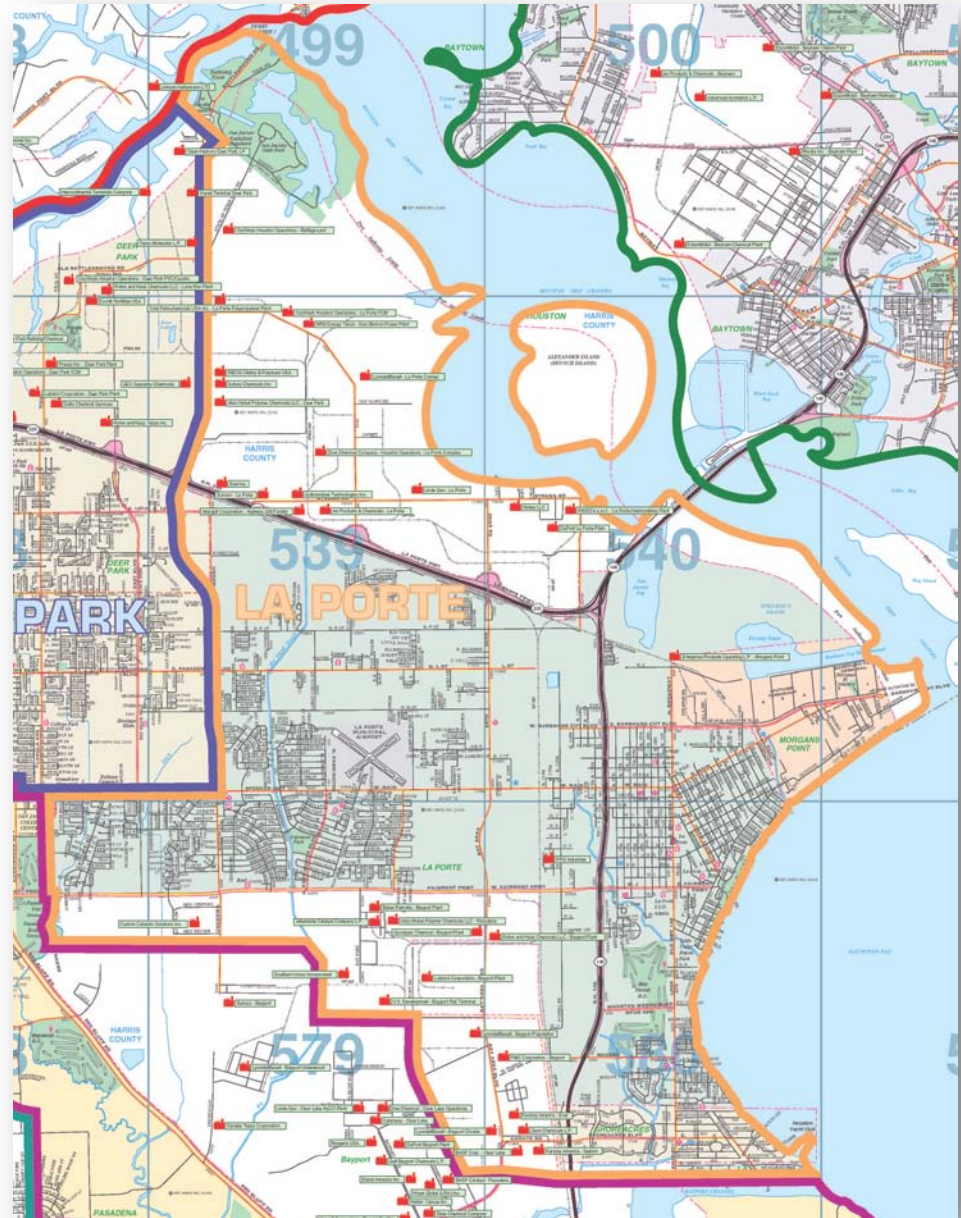
La Porte, Texas



La Porte LEPC Boundaries

La Porte LEPC

- ▶ Represents the cities of La Porte, Morgan's Point and Shoreacres
- ▶ Includes reps from industry, government, non-profits and school district
- ▶ Over 60 members
- ▶ Over 40 chemical manufacturers
- ▶ Meets once a month



Brief History of LEPC's

- ▶ The LEPC is a product of federal legislation passed in the wake of the Bhopal disaster in India.
- ▶ Congress passed the Emergency Planning and Community Right-to-Know Act (EPCRA), also known as Title III of the Superfund Amendments and Reauthorization Act (SARA), in 1986.
- ▶ The development of the Tier II
- ▶ Outreach regarding Risk Management Plans



What LEPC's Were *Intended* To Do

- ▶ The LEPCs use this information given by industry to perform hazard assessments for their communities. Under EPCRA and the Texas Community Right-to-Know Act, LEPCs may also request additional hazardous chemical information from facilities for emergency planning purposes.
- ▶ Provide Guidance to first responders
- ▶ Public Outreach
 - ▶ School Programs, Safety Fairs, Electronic/hardcopy media and trinkets



EPCRA Facts

- ▶ EPCRA establishes requirements for businesses and for federal, state, and local governments regarding emergency planning and community right-to-know (CRTK) reporting for hazardous chemicals.
- ▶ Two of the main goals of this law are to:
 - ▶ Provide a basis for each community to develop and tailor a chemical emergency planning and response program to suit the community needs, and
 - ▶ Provide the public with a right-to-know attitude to identify, quantify, locate, and determine the physical and chemical properties of hazardous substances in the community.



Recent Incidents in La Porte 2013

- ▶ 2013 brought 9 incidents involving community impact
- ▶ Explosion at Air Liquide facility
 - ▶ One fatality; one severely injured
 - ▶ Numerous explosions of cylinders in the facility
- ▶ Overturned propane truck at 225/146 interchange
 - ▶ 2 seriously injured
 - ▶ Shut down interchange for almost 24 hours
 - ▶ Flaring had to be conducted on site
- ▶ Fires at AkzoNobel and Enterprise Products
 - ▶ Visible to the community
 - ▶ Public information events





Air Liquide Explosion
2/9/13

Overtaken Truck 6/18/13



Recent Incidents throughout the U.S.

▶ West Explosion

- ▶ Began taking a closer look at collaboration between government and industry
- ▶ Begin taking a closer look at LEPC's
- ▶ President Obama issues Executive Order on chemical plant safety



▶ West Virginia Water Contamination

- ▶ Leak of MCHM from a storage tank into water supply
- ▶ More attention to chemical safety



Reaction from Public and Media

- ▶ **Dallas Morning News Special Section on West**
 - ▶ Investigation into LEPC's
 - ▶ Was the LEPC meeting regularly?
 - ▶ Why didn't officials better understand the risk of the materials stored at the site?
 - ▶ Numerous LEPC's across the State received requests for information
 - ▶ Highlighted need for stronger LEPC
- ▶ **New York Times Op-ED after West Virginia**
 - ▶ “The United States is facing an industrial chemical safety crisis”.
 - ▶ Proposes comprehensive regulatory reform to make operations safer
- ▶ **Both highlight the need for greater collaboration**



Relationships

- ▶ **Us vs. Them**
 - ▶ How do we change that mind set?
- ▶ **What is a responsible agency?**
 - ▶ Local, State or Federal
- ▶ **Why would we want to tell our “stuff”?**
 - ▶ Why wouldn't you?
- ▶ **What can you do for me?**
 - ▶ Speculation Demons
- ▶ **Historical perspective**
 - ▶ We can change the way we think. It is OK to change!



Communications

- ▶ Who knows what I know?
- ▶ How do we tell the story?
- ▶ When should we tell the story?
- ▶ Who gets to know the story?
- ▶ Electronic Notification
 - ▶ Enotify works wonders
 - ▶ Web Based Incident Reporting System
 - ▶ Utilize GIS Technology Where Applicable
 - ▶ Incident Audit Trail
 - ▶ Interface To Public Notification Systems
- ▶ The 3 things we truly need
 - ▶ What do you think has happened?
 - ▶ How long do you think it will be to resolve?
 - ▶ What do you need or want us to do?



Initial Incident Notification
Incident Number:48201-2012-4415-1
State Inc No:Not Assigned

1. Notification Action / Incident Classification:

- Level 3 - (Warning) Off Site Impact
- Level 2 - (Watch) Potential Off Site Impact
- Level 1 - Courtesy Notification
- Drill, Reverse Drill, Exercise, or Fire Training
- System Test (includes weekly plant alarm tests)
- e-Notify Training (Any level, e-notify training purposes only)

Noticeable To Community:

- Activity
- Flames/Flaring
- Noise
- Odor
- Sirens
- Smoke
- None

2. Incident Status:

MM/DD/YYYY Hour Minute

Incident Date: 8/29/2012 Time: 13 : 30 Occurred/Discovered/Planned: Planned

3. Recommended Protective Action for the Community and Neighboring Plants:

- Shelter In Place
- Evacuate
- None

4. Incident Type:

- Chemical
- Fire
- Explosion
- Security
- Other (Please describe in Item 9 - Comments)

5. Requested From Agencies:

- EMS
- Fire
- Police
- Nothing

6. Weather Information:

Temperature: 90 Farenheit Conditions: Sunny

Wind Speed: 15 MPH Wind Out Of: N

7. Chemicals Released:

Methane (Natural Gas)----- 100 Pound(s)

Chem Input Form

8. Recommended Road Closures:

Close Spencer Hwy Eastbound At College Park Dr.
Close Spencer Hwy Westbound At East Blvd

Road Input Form

9. Comments:

This facility will be conducting fire training for the next 3 hours.

Continue Notification

Abort Notification

Contact Information

Maps Notification Area

The screenshot displays the GeoMedia Professional interface. At the top, the title bar reads "GeoMedia Professional - [MapWindow1]". Below it is a menu bar with options: File, Edit, View, Insert, Tools, Analysis, Warehouse, Legend, Window, Help. A toolbar with various icons is positioned below the menu bar. A secondary toolbar contains icons for navigation and editing.

A floating window titled "Emerge Systems - e-Notify Incident Report Processor" is open, showing the system date and time: "System Date/Time: Thursday, Dec 4, 2008 5:02 PM". It includes buttons for History, Unhide, Refresh, Print, a green "Up" button, e-Notify, Configure, Test Sch'd, and Exit.

The main map area shows a grid of numbered cells (1-36) overlaid on a city street map. A large green circular area with concentric rings is centered on the grid. A red rectangular boundary encloses a portion of the grid, including cells 18 through 36. A yellow boundary outlines a larger area. The legend on the left lists various map features:

- Plants
- ToneAlerts
- HighwaySign
- Warning Zones
- Labels of Warning Zones
- callout
- Streets
- CityLimits
- SirenBuffer
- Sirens
- Airport
- Cable_Override
- Drainage_Channels
- Parks
- Railines
- Schools
- Labels of Streets
- Labels of SirenBuffer1
- jurisdiction
- AerialPhoto

At the bottom, the Windows taskbar shows the Start button and several open applications: "D:\e-Notify Inco...", "Microsoft PowerP...", "GeoMedia Prof...", and "CaptureEze97 Pr...". The system tray on the right shows the time as "5:02 PM".

Displays Incident Report

GeoMedia Professional - [MapWindow1]

File Edit View Insert Tools Analysis Warehouse Legend Window Help

Emerge Systems - e-Notify Incident Report Processor

System Date/Time: Thursday, Dec 4, 2008 5:00 PM

History Hide Refresh Print **Up** e-Notify Configure Test Sch'd Exit

Incident Number: 48201-2008-396-1
State Incident No:
Plant Name: Sunoco La Porte
Contact Name: Terry Waldrop
Contact Number: 281-620-2148

Notification Type: Level 3 - (Warning) Off Site Impact TEST
Sector/Mile: D/2.5 E/2.5
Recommended Action: **INCIDENT NOTIFICATION**
Chemical: Yes
EMS: No
Weather Condition:
Temperature:
Level 3 TEST
ACKNOWLEDGE

Date/Time Occurred: 4/29/2008 1:15:00 PM
Date/Time Discovered:
Date/Time Sent: 4/29/2008 1:35:56 PM
Date/Time Secured: NOT SECURED

Comments: This is a test by Dan Heiken

Chemicals: Ethylene - 100 Pound(s)
Close Miller Cut Off Northbound At Strang Road

PROCESSING FILE PLEASE WAIT

Start | D:\e-Notify Inco... | D:\e-Notify Inco... | Microsoft PowerP... | GeoMedia Prof... | CaptureEze97 Pr... | Search Desktop | 5:00 PM

Activates e-Merge

The screenshot displays the e-Merge software interface, which is used for configuring emergency notification systems. The interface is divided into several sections:

- Configuration / Activation Scenarios:** A dropdown menu lists various activation scenarios, with "AS-2, Monthly Test" selected.
- Voice Message:** A text box contains the message: "This is a message from the City of La Porte Office of Emergency Management. This is a test of the automated emergency notification system. This concludes".
- Tier Message:** A text box contains the message: "This is a test by the City of La Porte of the tier notification system".
- Message Files:** A list of files is shown, including "Level2.txt", "ShelterInPlace.txt", "Testing.txt", "TierClear.txt", "TierPagerTest.txt", and "TierTest.txt". Buttons for "Add Message", "Clear Message", "Add Tier Msg", and "Clear Tier Msg" are present.
- Geographic Notifications:** Includes checkboxes for "Sirens", "Phones" (checked), "Cable TV", "Voice Alerts", "AM Radio", "Call Group", and "Tier Group" (checked). Below these are fields for phone numbers and criteria.
- Non Geographic Lists:** Includes checkboxes for "AM Radio" and "Call Group", with a field for "281-291-9342".
- System Activations:** Includes checkboxes for "Gov't TV Channel", "GroupBuilder", "Highway Signs", "School Pagers", and "CAER Line".
- Status:** A summary box shows "Sirens - 0, Phones - 3, Cable Zones - 0, Voice Alerts - 0".
- Buttons:** "ACTIVATE!", "ABORT!", and "EXIT" buttons are located at the bottom of the configuration section.
- Metadata:** Fields for "Date/Time Discovered", "Date/Time Sent" (4/29/2008 1:35:56 PM), "Date/Time Secured" (NOT SECURED), "Weather Conditions" (Sunny), "Temperature" (70 Deg F), "Wind Direction" (N), and "Wind Speed" (5 MPH).
- Comments:** A text box contains "This is a test by Dan Heiken".
- Chemicals:** A text box contains "Ethylene - 100 Pound(s)".
- Roadblocks:** A text box contains "Close Miller Cut Off Northbound At Strang Road".
- Map:** A map on the right side shows a grid of numbered blocks (5, 9, 10, 16, 17, 25, 26, 27, 29, 30, 31, 32, 33, 34, 35, 36) with a red outline indicating a specific area.

The Windows taskbar at the bottom shows the Start button, several open applications (D:\e-Notify I..., Microsoft Po..., GeoMedia Pr..., CaptureEze9..., e-Merge), a search bar, and the system tray with the time 5:01 PM.

What LEPC's *Can* Do Legally

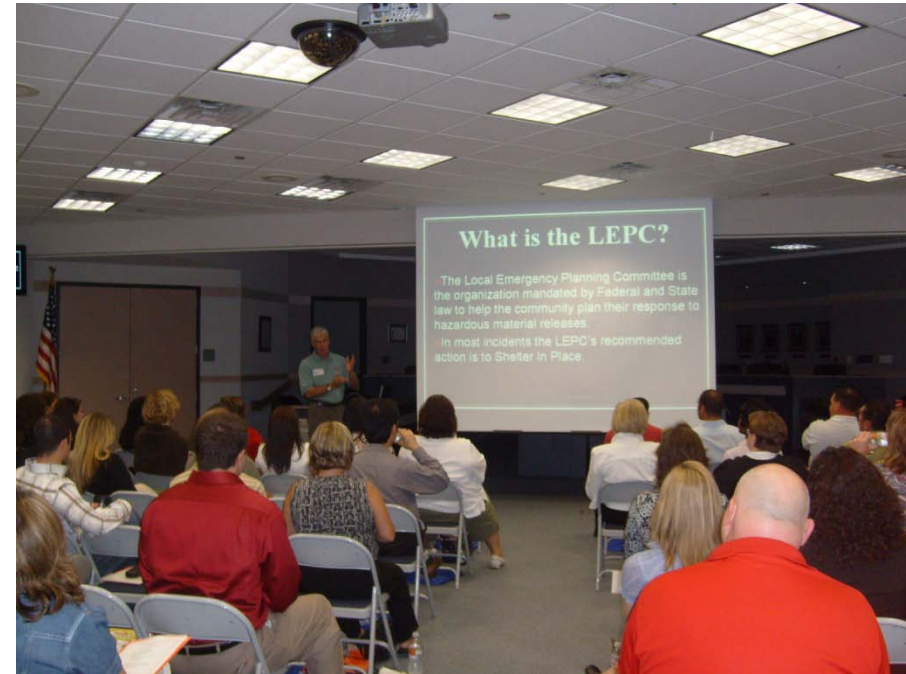
The citations are from EPCRA, Public Law 99-499. Each LEPC:

- ▶ Shall review local emergency management plans once a year, or more frequently as circumstances change in the community or as any facility may require (Section 303(a)).
- ▶ Shall make available each MSDS, chemical list described in Section 311(a)(2) or Tier II report, inventory form, and follow-up emergency notice to the general public, consistent with Section 322, during normal working hours at a location designated by the LEPC (Section 324(a)).
- ▶ Shall establish procedures for receiving and processing requests from the public for information under Section 324, including Tier II information under Section 312. Such procedures shall include the designation of an official to serve as coordinator for information (Section 301(c)).
- ▶ Shall receive from each subject facility the name of a facility representative who will participate in the emergency planning process as a facility emergency coordinator (Section 303(d)).
- ▶ Shall be informed by the community emergency coordinator of hazardous chemical releases reported by owners or operators of covered facilities (Section 304(b)(1)(a)).
- ▶ Shall be given follow-up emergency information as soon as practical after a release, which requires the owner/operator to submit a notice (Section 304(c)).
- ▶ Shall receive from the owner or operator of any facility a MSDS for each such chemical (upon request of the LEPC or fire department), or a list of such chemicals as described (Section 311(a)).
- ▶ Shall, upon request by any person, make available an MSDS to the person in accordance with Section 324 (Section 311(a)).
- ▶ Shall receive from the owner or operator of each facility an emergency and hazardous chemical inventory form (Section 312(a)).
- ▶ Shall respond to a request for Tier II information no later than 45 days after the date of receipt of the request (Section 312(e)).
- ▶ May commence a civil action against an owner or operator of a facility for failure to provide information under Section 303(d) or for failure to submit Tier II information under Section 312(e)(1) (Section 326(a)(2)(B)).



Benefits of a Proactive LEPC

- ▶ Community Support
- ▶ An Understanding mentality
- ▶ Public Awareness



Governance

- ▶ Committee members lead by local industry
- ▶ Chair
- ▶ Vice Chair
- ▶ 5 committee chair
- ▶ PIO

- ▶ Bylaws- important to set expectations





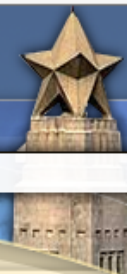
CITY OF
LA PORTE
TEXAS



SEARCH

Search...

GO



QUICKLINKS

Select a Quick Link ▾

Tuesday, May 13, 2014



Email



Print

HOME

ABOUT THE CITY

CITY DEPARTMENTS

ONLINE SERVICES

CITY COUNCIL

BOARDS & COMMISSIONS

eNEWSLETTER

IMPORTANT LINKS

CONTACT US

[Homepage](#) > LEPC

La Porte, Morgan's Point & Shoreacres Local Emergency Planning Committee (LEPC)

The La Porte, Morgan's Point and Shoreacres Local Emergency Planning Committee (LEPC) works with local government to develop emergency plans and increase citizen awareness of the appropriate actions to take during a chemical emergency.

The LEPC works closely with the cities, schools and community to encourage emergency preparedness and provide shelter in place education to those who live and work in our area. As a part of this effort, the LEPC sponsors and participates in several community outreach events each year. We are always looking for new ways to reach out to the communities in our area.

The purpose of the LEPC is to carry out for La Porte, Morgan's Point and Shoreacres those responsibilities established for the LEPC by Public Law 99-499, Superfund Amendments and Reauthorization Act of 1986 (SARA) Title III, the Emergency Planning and Community Right-to-Know Act, (EPCRA) and related regulations. Click [here](#) to review the LEPC Bylaws.

Meetings:

The LEPC meets the second Thursday of each month at 11:00 a.m. Meetings are held at the La Porte ISD Support Services building, located at 2015 Sens Road. [View a map of the location.](#) For questions or directions, contact us at (281) 470-0010.

PLANT ALARM TEST SCHEDULES

The LEPC recently mailed out the following information on local plant alarm test schedules. Please click [here](#) for more information on both the City's and local industry alarm systems.

LEPC Home

Shelter In Place >

Alarm System

Emergency Notification

Members

Committees >

Documents >

CAER Line

Schools

Community

Local Business

Summary

- ▶ Reach Out
- ▶ *Don't be afraid*
- ▶ Make it YOUR mission to enhance the LEPC
- ▶ *Don't be scared*
- ▶ Find a spot you can benefit from
- ▶ *Don't hide from the unknown*
- ▶ Use it as a measurement tool for your City/County
- ▶ *Don't be close minded*
- ▶ Help those who need your help
- ▶ *Not EVERY chemical or company is out to get you (only a few)*



Questions?

Jeff Suggs, CEM
Emergency Management Coordinator
City of La Porte
281-470-0010

www.laportelepc.org
suggsj@laportetx.gov

